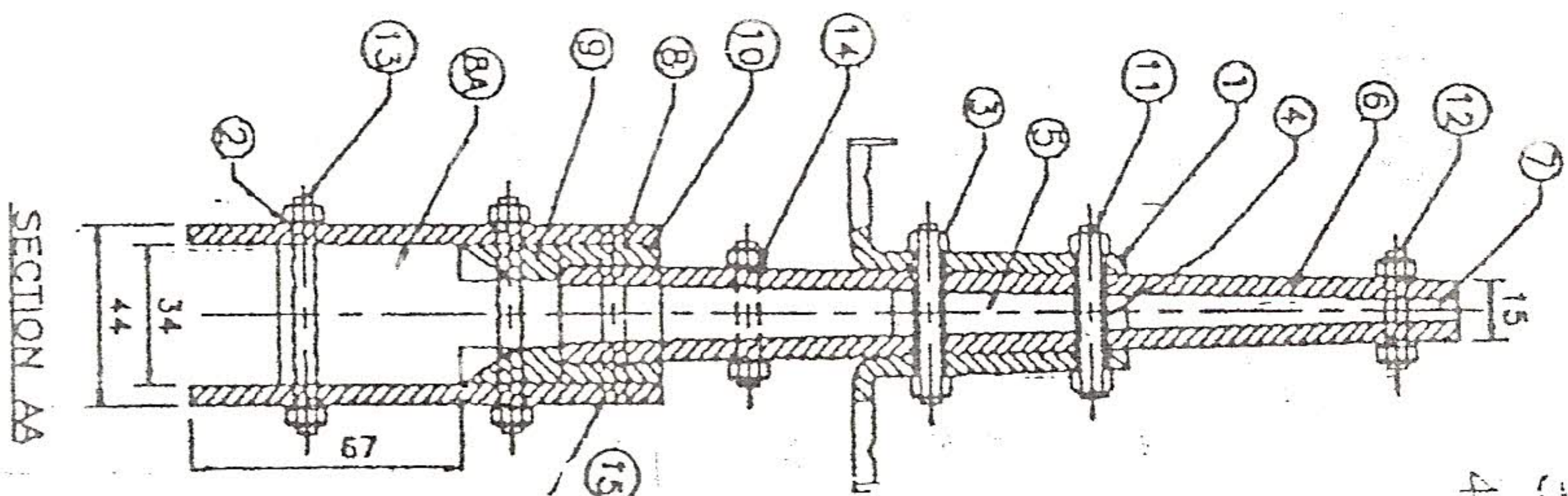
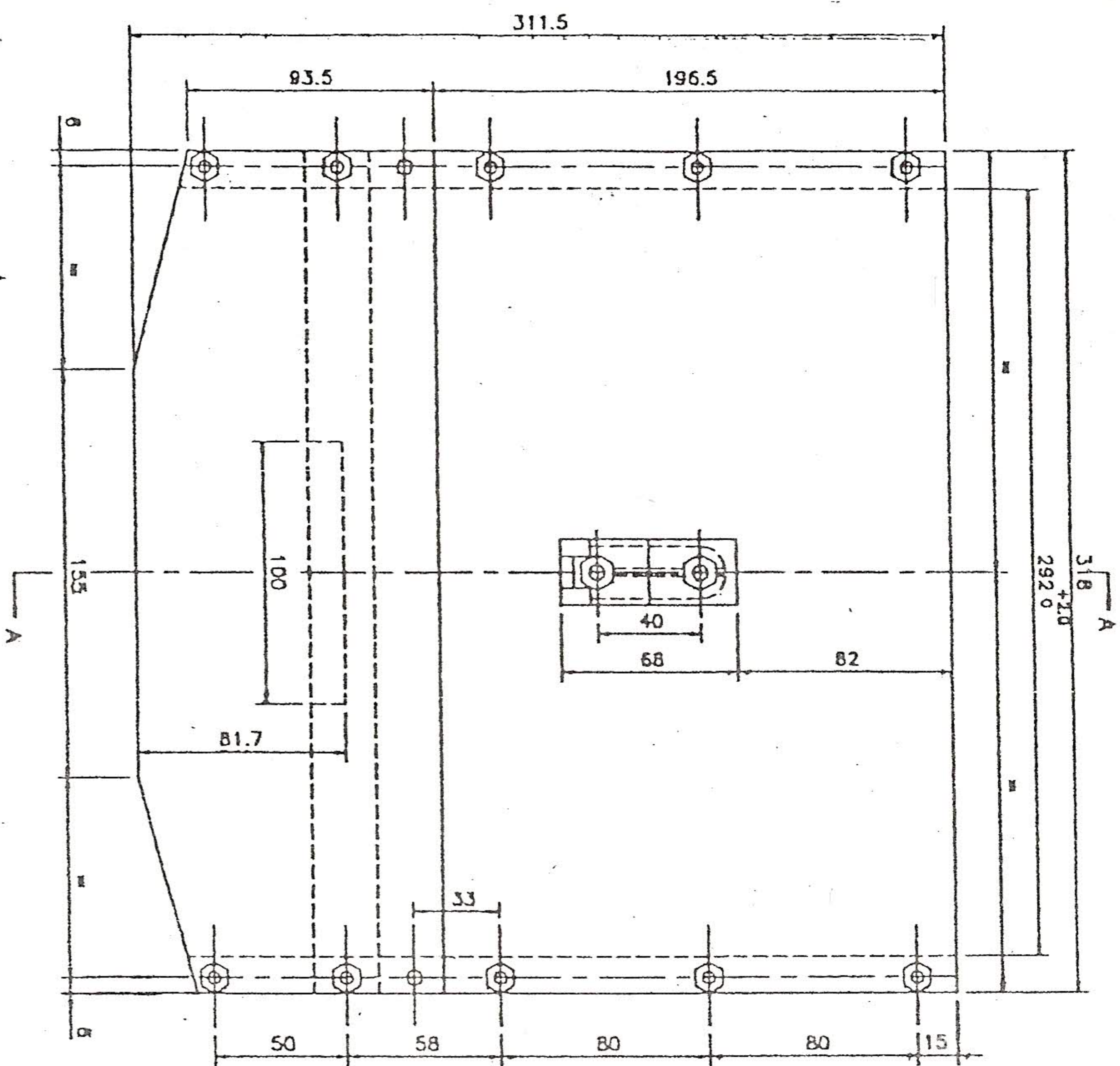


NOTES-

1. ALL DIMENSIONS ARE IN MM.
2. REF. PART NO. 8,9 AND 10 COULD BE IN ONE PIECE
3. ALL EXPOSED STEEL PARTS TO BE CADMIUM PLATED.
4. TOLERANCES AS PER IS:2102/1980



REF. NO.	DESCRIPTION	QTY.	MATL.
1	ANGLE	2	IS:1079-94/IS:225
2	PLAIN WASHER O/D:10, I/D:5 THK. 1	20/24	BRASS IS: 4.0
3	SPECIAL NUT	4	BRASS IS: 319
4	INSULATING TUBE	2	TEFLON
5	ELECTRODE (Ag PATED)	1	ELECTROLYTIC COPPER IS: 613
6	RECTANGULAR PLATE	2	GLASS BONDED MICA
7	TAPER STRIP	2	GLASS BONDED MICA
8	SMALL RECT. PLATE	2	GLASS BONDED MICA
8A	SMALL DISTANCE PIECE	2	GLASS BONDED MICA
9	RECT. SMALL STRIP	2	GLASS BONDED MICA
10	RECT. SMALL STRIP	2	GLASS BONDED MICA
11	STUD M5 X .08 X 38L	2	IS: 1364
12	STUD M5 X 0.8 X 32L	6	IS: 1364
13	STUD M5X0.8X56L	4/6	IS: 1364
14	NUT M5	20/24	IS: 1364
15	INSULATED RIVET / STUD (M5 X 54L)	2	IS: 1364

REF. NO.	DESCRIPTION	SCALE	QTY.	APPR. BY	MATL.
				<i>[Signature]</i>	

ARCING CHAMBER(CGR)
OEM PART NO. S-27

FIRST ISSUED
 SUPerseds

RDSO ELECT. DTE. SKEL-4675

SUPerseded BY

Dt	18.09.03
D	AJA
T	
C	<i>[Signature]</i>

STATUS	ALT.	REF. NO.	DESCRIPTION	APPR. BY	DATE
	1		Item 15 changed; IS:1364 added, M5 NUT M5-S2700(M5SGL) Item 14 call: St. B. 8 in System Item 16 to S. MICA THK removed	<i>[Signature]</i>	Dec. 03

