

THIS NEW SPECIFICATION SUPERSEDES THE OLD SPEC. NO. CLW/ES/N-6

TENDER SPECIFICATION
 NO. CLW/ES/N-7 ~~ALT. A B C D E~~
 Alt. -
Enclosure Drgs.

CLW / ES / SK-1 / N-7 ~~ALT. A B~~
 CLW / ES / SK-2 / N-7 ~~ALT. A B~~
 CLW / ES / SK-3 / N-7 ~~ALT. A B~~
 CLW / ES / SK-4 / N-7 ~~ALT. A B~~
 CLW / ES / SK-5 / N-7 ~~ALT. A B~~
 CLW / ES / SK-6 / N-7 | (Ref. Mech.
 CLW / ES / SK-7 / N-7 | Drg. No.
 CLW/ES/SK-8/N-7 ~~ALT. A B~~ 06/2/65/13)

TOTAL No. OF SHEETS IN THIS SPECIFICATION - ~~28~~ 27 ~~28~~ 29

ALT.	A	B	C	D	E				
SHEETS	27	28	28	28	29				

**SPECIFICATION FOR
 NAME PLATES FOR 25 K.V. A.C.
 ELECTRIC LOCOMOTIVES
 CLASS WAG-7 & WAP-4**

ISSUED BY:
 DY. CHIEF ELECTRICAL ENGINEER(D-I),
 CHITTARANJAN LOCOMOTIVE WORKS,
 P.O. CHITTARANJAN - 713331,
 DIST: BURDWAN, WEST BENGAL, INDIA.

JPS
 AEE/SEE
 CHKD.
 DRN.

SPECIFICATION FOR NAME
 PLATES FOR WAG-7 & WAP-4
 LOCOS

[Signature]
 DY. CEE (D).

CHITTARANJAN LOCOMOTIVE
 WORKS
 WEST BENGAL, INDIA.

NO. CLW / ES / N-7 ALT. ~~A B C D~~
 DATE: 11/02/2006. E

DETAILS OF ALTERATIONS

ALT NO.	DATE	PAGE NO.	DESCRIPTION	SIGNATURE OF AUTHY...	REMARKS
A	27-10-07	27.	New sheet of Instruction Plate for BPEMS switch attached with this specification as sheet no. 27.	<i>[Signature]</i> 27.10.07	
B	27-06-08	28	Sheet no 28 has been added for the introduction of Name plate in Crew friendly Loco of WAG-7 Cable Loom based Locomotive. From Loco NO: HH 1000 onwards.	<i>[Signature]</i> 27.6.08	
C	03.02.09	27	The spelling of 'RUNING' will be 'RUNNING' (ii) Thicknes & note no ① is included in sheet - 27	<i>[Signature]</i> 3/25	
D	15.6.09	8 to 16	Deletion and addition of name plates have been mentioned from sheet no. 8 to 15. Deletion of name plates have mentioned in sheet no. 16.	<i>[Signature]</i> 16.6.09	
E	18.3.10	8 & 29	VCD Relay for VCD is introduced in sheet no. 8 for implementation of VCD & new instruction sheet for operation of VCD is introduced at sheet no. 29	<i>[Signature]</i> 18/3/10	

[Signature]
AEE/SEE

[Signature]
CHKD.

[Signature]
DRN.

SPECIFICATION FOR NAME PLATES FOR WAG-7 & WAP-4 LOCOS

[Signature]
DY. CEE (D).

CHITTARANJAN LOCOMOTIVE WORKS
WEST BENGAL, INDIA.

NO. CLW/ES/N-7
DATE: 11/02/2006.

ALT. *[Signature]*
E

AC -2 PANEL

Q-119 (D) MCP Back up Pressure Relay	QVLSOL (D) Relay mult. Operation	BD-1 (TOP)	BD-2 (Bottom)
QRSI -1 Relay Rectifier	Q-46 (D) Relay GR protect	BD-2 (TOP)	BD-3 (Bottom)
QRSI -2 Relay Rectifier	QOP-1 Relay power earth	BD-3 (TOP)	BD-4 (Bottom)(MID)
Q-30 (D) Relay no volt	QOP-2 Relay power earth	BD-4 (TOP)	BD-1 (Middle)
QLM Relay TFP O / L	QV-61 (D) Relay bat. Charger sig.	BD-1 (Bottom)	BD-2 (Middle)
QE Relay O/L Brk. Ext. Trans.	SB-2, TK	BP-1, DJ Switch open DJ	BD-3 (Middle)
QV-60 (D) Relay DJ signal	ZLE-3, SW. LE-3	BP-2, DJ Switch close DJ	TSACP TS For ACP
QV-62 (D) Relay GR signal	SB-4, TK	LE-3 Lamp AC-2	QFL Relay For FL
QV-63 (D) Relay Rect. Signal	Q-45 (D) Relay DJ Reset	LE-4 Lamp AC-2	RPQOP-1
Qv-64 (D) Relay control sig.	Q-50 (D) Relay power control	SB (TR) (D)	RPQOP-2
Q-51 (D) Relay Aux. Slip	QWC (D) Relay WT. Comp.	C-101 Capacitor MCP-1	RHOBA
Q-49 (D) Relay Synchro. GR	QRS (D) Relay Emerge. Brake	C-102 Contactor MCP-2	SB -2 (TK)
Q-52 (D) Relay Gr. Notch	TSFL Testing switch for FL	C-103 Contactor MCP-3	
Q-48 (D) Relay slip	QCON (D) Relay for SI 'ON'	C-105 Contactor MVMT-1	
Q-44 (D) Relay trip DJ	QSIT Relay for SI strip	C-106 Contactor MVMT-2	
Q-118 (D) Relay aux. Protect.	QSYM (D) Relay for VM start	C-107 Contactor MVRH	
QVCD Relay (PC-8) For VCD	QEMS Relay For Emergency stop	C-108 Contactor for MVRF	

Total nos. of Name Plates ~~4055~~ nos. + 3 nos. spare = ~~5873~~ nos. per loco as per drawing no.

CLW/ES/SK-1/N-7

SPECIFICATION FOR NAME
PLATES FOR WAG-7 & WAP-4
LOCOS

DR. CEE (D)

CHITTARANJAN LOCOMOTIVE
WORKS
WEST BENGAL, INDIA.

NO. CLW / ES / N-7
DATE: 11/02/2006.

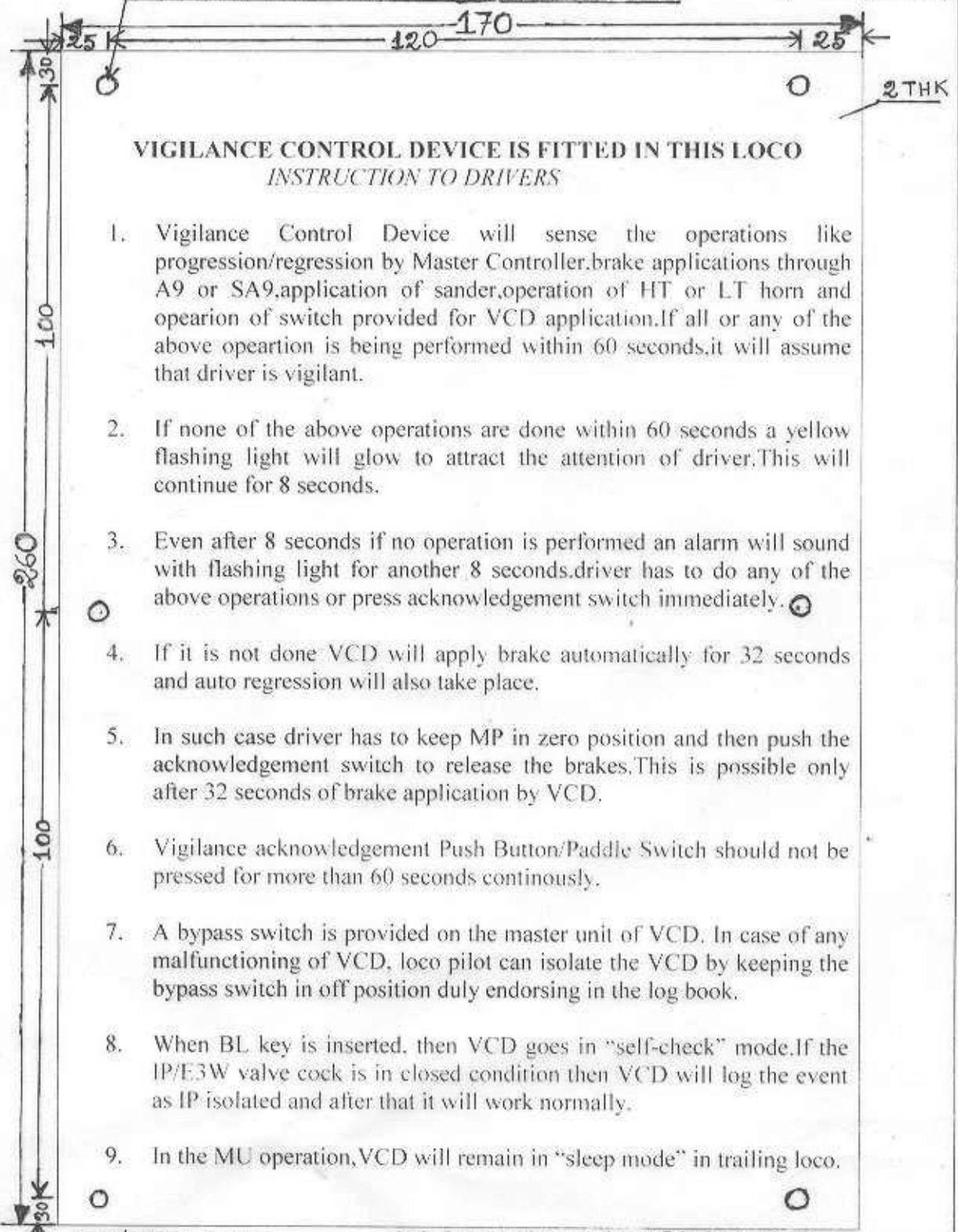
ALT. A ~~84D~~
E

APRIL
AEE/SEE

15/04/06
CHKD.

DRN.

6 HOLES OF ϕ 3.0 TO BE DRILLED IN POSITION



VIGILANCE CONTROL DEVICE IS FITTED IN THIS LOCO
INSTRUCTION TO DRIVERS

1. Vigilance Control Device will sense the operations like progression/regression by Master Controller, brake applications through A9 or SA9, application of sander, operation of HT or LT horn and operation of switch provided for VCD application. If all or any of the above operation is being performed within 60 seconds, it will assume that driver is vigilant.
2. If none of the above operations are done within 60 seconds a yellow flashing light will glow to attract the attention of driver. This will continue for 8 seconds.
3. Even after 8 seconds if no operation is performed an alarm will sound with flashing light for another 8 seconds. driver has to do any of the above operations or press acknowledgement switch immediately.
4. If it is not done VCD will apply brake automatically for 32 seconds and auto regression will also take place.
5. In such case driver has to keep MP in zero position and then push the acknowledgement switch to release the brakes. This is possible only after 32 seconds of brake application by VCD.
6. Vigilance acknowledgement Push Button/Paddle Switch should not be pressed for more than 60 seconds continuously.
7. A bypass switch is provided on the master unit of VCD. In case of any malfunctioning of VCD, loco pilot can isolate the VCD by keeping the bypass switch in off position duly endorsing in the log book.
8. When BL key is inserted, then VCD goes in "self-check" mode. If the IP/E3W valve cock is in closed condition then VCD will log the event as IP isolated and after that it will work normally.
9. In the MU operation, VCD will remain in "sleep mode" in trailing loco.

QTY/LOCO - 2NOS

ALL DIMENSIONS ARE IN mm

A. Basu
 DRN.
 CHKD.
 AEE/SEE 1/14/10

SPECIFICATION FOR
NAME PLATE
FOR WAG-7, WAP-4 LOCOS

1/14/10
 DY. CEE/D-II

CHITTARANJAN LOCOMOTIVE WORKS
 WEST BENGAL, INDIA.

NO. CLW/ES/IN-7
 DATE: 01/04/2010.

ALT E