

**SPECIFICATION FOR
HIGH VOLTAGE BUSHING
FOR
WAG-9/WAP-7/WAP-5 ELECTRIC LOCOMOTIVES**

Specification No : CLW/ES/3/0052/E

ISSUED BY

DY.CHIEF ELECTRICAL ENGINEER/D-II
CHITTARANJAN LOCOMOTIVE WORKS
CHITTARANJAN – 713331
Dist: BARDHAMAN (WEST)
WEST BENGAL (INDIA)

Prepared By	Checked By	Issued By
SSE-Design	SEE -Design	Dy.CEE/D-II

INDEX

1. GENERAL DESCRIPTION
2. SCOPE
3. CLIMATE AND ENVIRONMENTAL CONDITION
4. STANDARDS
5. TECHNICAL DATA
6. GENERAL FEATURES
7. TESTS
8. LABEL AND MARKING

Prepared By	Checked By	Issued By
SSE-Design	SEE -Design	Dy.CEE/D-II

ALTERATION RECORD SHEET

Amendment Number	Date of Amendment	Page number	Alteration	Descriptions	Authority
1	19/05/1998		A	Deleted Cl. No.7 to 7.7 at Page No.6,7,8,9 & 11 Deleted Previous Drg. No. 1. CLW/ES/3/SK-4/0052 2. CLW/ES/3/SK-5/0052 3. CLW/ES/3/SK-6/0052 4. CLW/ES/3/SK-7/0052 5. CLW/ES/3/SK-8/0052	Sd/-
2	1/04/2006		B	Specification Re-Type and Brass Nut-M20 Added in Scope of supply.	Sd/-
3	06-09-2010		C	Specification thoroughly revised due to inclusion of new drawing no-CLW/ES/3/SK-4/0052 added	Sd/-
4	27-02-2016		D	Nitrile Bonded Cork Gasket included in scope of supply in clause no-5.2 (a) new clause 6.2.	Sd/-
5			E	Specification thoroughly revised and drawing no- CLW/ES/3/SK-4/0052 & CLW/ES/3/SK-2/0052 deleted. Test clause 7.1.8 measurement of weight included. In clause no.4.0, EN 45545 or UL94-V0 for fire-retardant properties of all the non-metallic parts included. In clause no. 5.7, Creepage Path of Bushing changed from ≥ 806 mm to ≥ 1050 mm.	

Note: Specification has been digitized and all the alteration i.e. addition , deletion, modification etc. has been incorporated in the digitized specification.

Prepared By	Checked By	Issued By
SSE-Design	SEE -Design	Dy.CEE/D-II

1.0 GENERAL DESCRIPTION

SPECIFICATION FOR HIGH VOLTAGE BUSHING ASSEMBLY FOR WAG-9/WAP-7/WAP-5 3-PHASE DRIVE 25 KV SINGLE PHASE 50 Hz ELECTRIC LOCOMOTIVE.

2.0 SCOPE:

This specification covers the supply of High Voltage Bushing being used on the roof of the WAG-9/WAP-7/WAP-5 3-Phase Drive 25 KV Single Phase 50 HZ AC Electric Locomotive of Indian Railways.

3.0 CLIMATIC AND ENVIRONMENTAL CONDITION

SL.No	Description	Remarks
3.1	Maximum atmospheric temperatures :	<ul style="list-style-type: none"> • Metallic Surface temperature Under Sun: 75°C Max and in Shade : 55°C • Minimum Temperature -10 °C (Also. Snow Fall in certain areas during Winder winter season).
3.2	Maximum Humidity	100% saturation during rainy season
3.3	Reference site conditions	<ul style="list-style-type: none"> • Ambient Temperature : 50°C • Humidity : 100%. • Altitude : 1776m above mean sea level
3.4	Rainfall	Very heavy in certain areas. The locomotive shall be designed to permit it's running at 10 Km per hour in flood water level of 102 millimeter above Rail level.
3.5	Atmosphere during hot weather	Extremely dusty and desert terrain in certain areas. The dust concentration in air may reach a high value of 1.6 mg/m ³ . In many iron ore and coal mine areas, the dust concentration is very high affecting the filter and air ventilation system
3.6	Coastal areas	Locomotive and equipment shall be designed to work in coastal areas in humid and salt laden atmosphere with maximum pH value of 8.5. Sulphate of 7 mg per liter, max. concentration of Chlorine 6 mg per liter and maximum conductivity of 130 μ Siemens /cm.
3.7	Vibration	The equipment and subsystem and their mounting arrangement will be designed to withstand vibrations and shocks encountered in service as per IEC 61373 or latest unless otherwise prescribed.
3.8	Electromagnetic Pollution	High Degree of Electromagnetic Pollution is anticipated in Locomotive Machine Room, where part of the equipment will be mounted. Necessary precaution should be taken in this regard.
3.9	Wind Speed	High Wind Speed in certain areas, with Wind Pressure reaching 150 Kg/m ²

4.0 STANDARAD :

IEC-60077 or latest Rules for Electrical Traction Devices.

IEC-61373 or latest for Shock & Vibration.

IEC-60270 or latest for Partial Discharge Measuremen.t

Prepared By	Checked By	Issued By
SSE-Design	SEE -Design	Dy.CEE/D-II

IEC- 60137 or latest for Insulated Bushings for Alternating Voltages.
 IEC: 60060 or latest for Voltage Test under Rainfall.
 IEC: 2099 or latest for Insulated Bushings for Alternating Voltages.
 EN 45545 or UL94-V0 for fire-retardant properties of all the non-metallic parts.

5.0 TECHNICAL DATA.

5.1 Rated System Voltage	: 35 KV class
5.2 Nominal Current (Approx.) at 70 °C Air Temp.	: 630 Amps
5.3 Frequency	: 50HZ \pm 3%
5.4 Power Frequency Withstand Voltage (Dry)	: 75KV r.m.s
5.5 Power Frequency Withstand Voltage (Wet)	: 75KV r.m.s
5.6 Impulse Voltage Withstand Voltage (1.2/50 Wave Shape)	: 170KVP
5.7 Creepage Path of Bushing	: \geq 1050 mm

6.0 GENERAL FEATURES:

6.1 Outdoor Type High Voltage Bushing with **Porcelain/Epoxy** Housing shall be used on the roof of the 3-Phase drive Locomotives. The High Voltage Bushing shall be an integrated unit comprising upper part of Bushing compatible to external connection with mounting base suitable for mounting on 160 mm PCD with 6 nos. holes of 14 mm dia and lower part shall be compatible/have proper interface with T-Type Elastimold connectors Type 755 / 56 BLR, a part of Cable Head Termination (CHT) assembly coming from main transformer.

6.2 To avoid water entry inside the Locomotive through mounting arrangement, provision of 'O' ring with groove on the mounting SS flange or any alternate suitable method shall be provided. **Suitable Nitrile Bonded Cork Gasket of 5mm \pm 1mm thick (IS: 4253 part-2-1989) to be supplied by firm.**

6.2(a) Suitable Nitrile Bonded Cork Gasket of 5mm \pm 1mm thick (IS: 4253 part 2-1989) to be supplied by Firm. Added with 6.2

6.3 ~~Drgs. / Details for presently approved design of M/s Micafil and M/s EIPL (with bushing of M/s Elliot. USA) is given in Drg. No. CLW/ES/3/SK-4/0052. New offer, if any, has to comply the overall dimensions with these products.~~

Details of assembly drawing no- CLW/ES/3/SK-1/0052/E enclosed. However, number of petticoat given in the drawing for reference only. Firms should get approval of their own drawing from CLW/BLW/RDSO complying the overall dimensions, mounting arrangement with the drawing and creepage distance to be maintained \geq 1050mm.

6.4 Weight of the High Voltage Bushing Assembly shall not be generally more than ~~the weight of the Micafil Bushing i.e. 22 Kg.~~ **22kg.**

6.5 High Voltage Bushing shall be outdoor type application.

6.6 The High Voltage Bushing shall be suitable for continuous duty.

6.7 The mounting compatibility of the Bushing shall be as under:

Mounting SS Plate OD	: 200 mm
PCD	: 160 mm
No. of Holes on PCD	: 6 nos.
Hole Dia	: 14 mm

Height of the Bushings Shall not be more than 540mm from the roof of the locomotives. **Replaced from existing clause no-6.2.2**

Prepared By	Checked By	Issued By
SSE-Design	SEE -Design	Dy.CEE/D-II

7. TEST

7.1 TYPE TESTS : The Type Tests shall be carried out **once in five years** in the presence of authorized representative of Railways / Production Units /RDSO. The Type Tests once conducted on the complete unit supplied by a particular manufacturer need not be repeated within a period of five years provided its performance is satisfactory during this period. Type tests may be repeated in between this period, if any change in the Manufacturing Process, Construction, Material and Design of High Voltage Bushing assembly or its accessories is introduced.

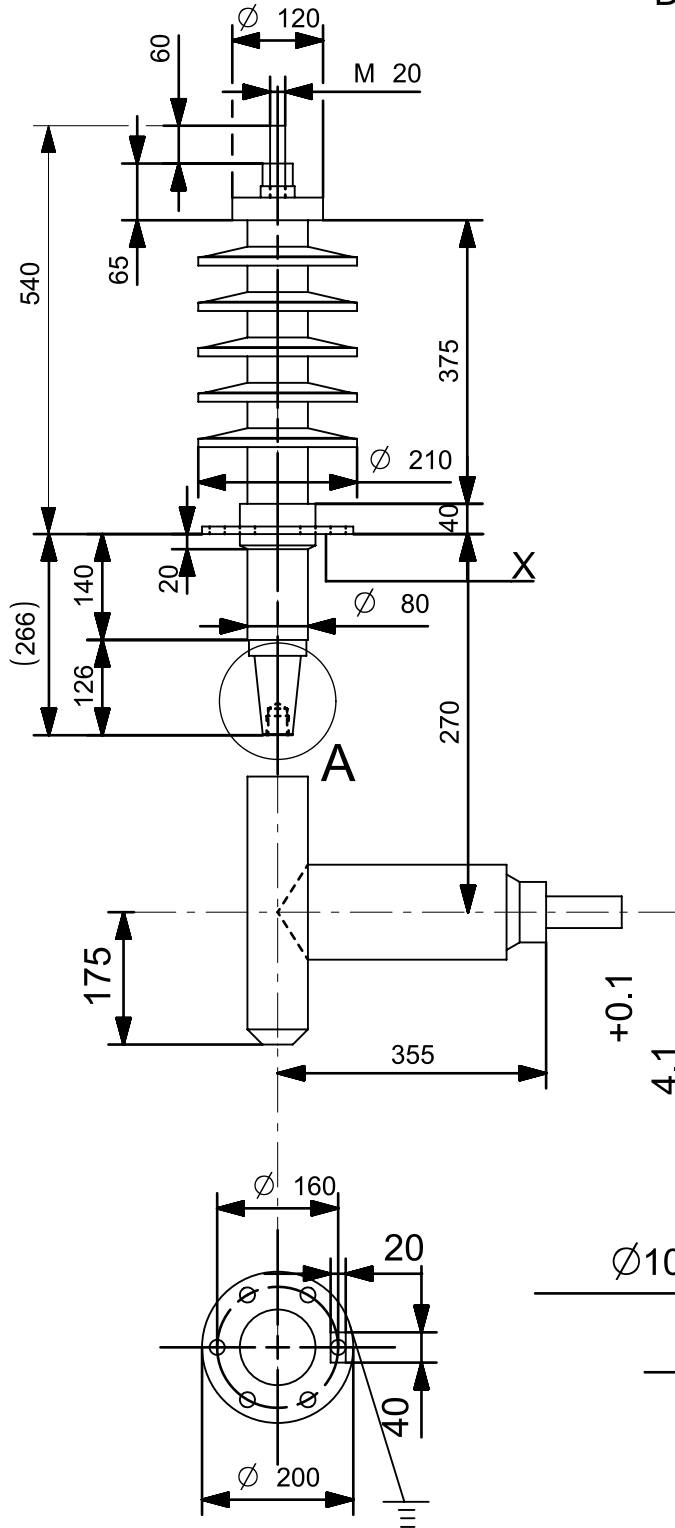
Clause No	Test Description	Type Test	Routine Test
7.1.1	Physical and Dimensional measurement as per drawing.	Y	Y
7.1.2	Varification of OEM's documents : The authorized letter from OEM & purchase documents of High Voltage Bushing & associated accessories if procured from outside shall be verified by the inspecting agencies of Indian Railways/ PUs /RDSO.	Y	Y
7.1.3	Dry - Power frequency Withstand Voltage Test at 75 KV (RMS) as per IS:2099-1986. IEC-I37-1984	Y	Y
7.1.4	Wet Power Frequency Withstand Voltage Test at 75 KV (RMS) as per IS:2099-1986. IEC-137-1984.	Y	NA
7.1.5	Impulse Voltage Test at 170 KV Peak, as per IS:2099-1986 or latest.	Y	NA
7.1.6	Partial Discharge Test: PD Test on High Voltage Bushing Unit shall be carried out as per IEC.60270 at 30 KV extinction voltage. The PD value shall be less than 5 PC .	Y	NA
7.1.7	Shock and Vibration Test: Shock & Vibration Test shall be carried out as per IEC: 61373 or latest	Y	NA
7.1.8	Measurement of Weight : Measurement of weight to be done as per clause no-6.4.i.e weight should be not more than 22kg.	Y	Y

Note: The Type test Certificate approved by **RDSO/CLW /BLW** shall be valid for a period of five years.

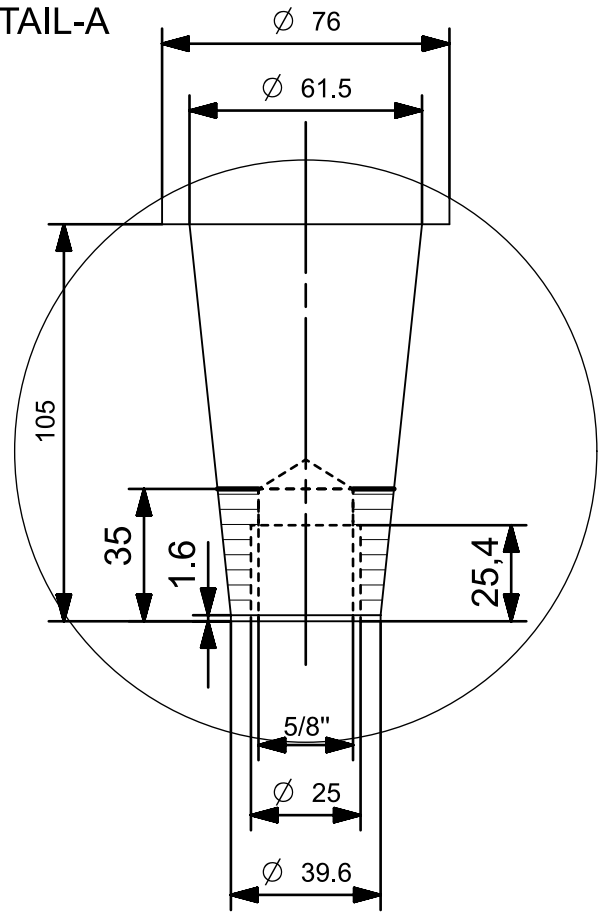
8.0 Label and Marking :

- i) Manufacturers name
- ii) Year of manufacture
- iii) Trade mark if any
- iv) Batch No. & Code
- v) Serial No of the product

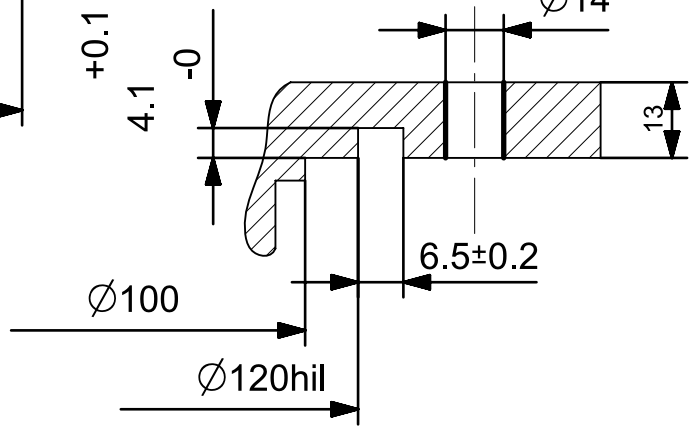
Prepared By	Checked By	Issued By
SSE-Design	SEE -Design	Dy.CEE/D-II


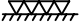
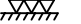







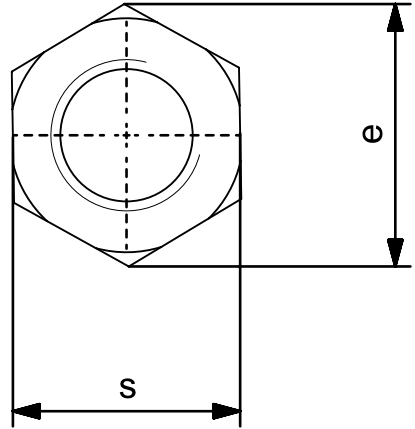
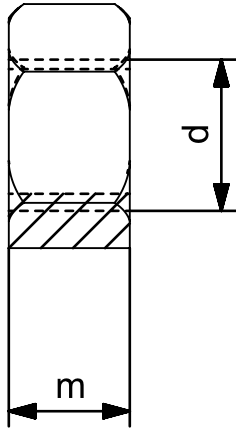
DETAIL-A



DETAIL-X




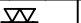
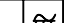


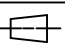


													अभिकल्पित DGN		<div></div> <div>चितरंजन रेलइंजन कारखाना CHITTARANJAN LOCOMOTIVE WORKS, INDIA</div>											
													जॉचा व.अ.अ. CHD SSE													
परिवर्तन संख्या ALT.NO.		प्राधिकार AUTHY		वर्णन DESCRIPTION						दिनांकित बाह्य DATED INITIAL		समीक्षित स.वि.अ. / व.वि.अ. REVIEWED AEE / SEE		पदार्थ MATL		प्रति भार कि. ग्रा. WT. EACH IN KG										
सतह — रक्षाता मान मा. 3073 / अ. मा. सं. 1302 SURFACE ROUGHNESS VALUE TO IS:3073 / ISO:1302		अनिर्दिष्ट सद्य — सीमा मा. मा. : 2102 / अ. मा. सं. : 2768 UNSPECIFIED TOLERANCE TO IS : 2102 / ISO : 2768						TOL. CLS.		अनुमोदित स.पु.वि.अ. APPROVED DYCEE		विशिष्ट SPECN		वर्णन DESCRIPTION		आरेखण संख्या DRAWING NO.										
		धातु-वेल्डन चिन्ह मा. मा. : 813 / अ. मा. सं. : 2553 WELDING SYMBOLS TO IS:813 / ISO:2553								दिनांक DATE																
पदांक GRADE NO.		सं1 N1	सं2 N2	सं3 N3	सं4 N4	सं5 N5	सं6 N6	सं7 N7	सं8 N8	सं9 N9	सं10 N10	सं11 N11	सं12 N12	रैखिक अनुपात SCALE		N.T.S										
Rz		0.16-0.3	0.5-0.7	0.9-1.1	1.5-2.0	2.5-3.8	5.0-6.3	9.0-12	16-25	30-40	50-63	75-100	160-250													
Ra μm		0.025	0.05	0.1	0.2	0.4	0.8	1.6	3.2	6.3	12.5	25	50													
चिन्ह SYMBOL																										
													संदर्भ / REF.		ALT. -		<div></div>		परिवर्तन संख्या ALTERATION. NO.		पृष्ठ SHEET		7 OF 8		A4	



d	M20
m	16
e	34.7
s	30

BRASS NUT

													अधिकारित DGN			चितरंजन रेलइंजन कारखाना CHITTARANJAN LOCOMOTIVE WORKS, INDIA			
													जॉचा व.अ.अ. CHD SSE						
परिवर्तन संख्या ALT.NO.		प्राधिकार AUTHY		वर्णन DESCRIPTION						दिनांकित बाधक DATED INITIAL		समीक्षित स.वि.अ. / व.वि.अ. REVIEWED AEE / SEE		पदार्थ MATL		प्रति भार कि. ग्रा. WT. EACH IN KG			
सतह - रूखाता का मान मा. 3073 / अ. मा. सं. 1302 SURFACE ROUGHNESS VALUE TO IS:3073 / ISO:1302		अनिर्दिष्ट सद्य - सीमा मा. मा. : 2102 / अ. मा. सं. : 2768 UNSPECIFIED TOLERANCE TO IS : 2102 / ISO : 2768						TOL. CLS.		अनुमोदित स.मु.वि.अ. APPROVED DYCEE				विशिष्ट SPECN					
		धातु-वेल्डन चिन्ह मा. मा. : 813 / अ. मा. सं. : 2553 WELDING SYMBOLS TO IS:813 / ISO:2553								दिनांक DATE				वर्णन DESCRIPTION		SPECIFICATION FOR HIGH VOLTAGE BUSHING			
पदांक GRADE NO.		सं1 N1	सं2 N2	सं3 N3	सं4 N4	सं5 N5	सं6 N6	सं7 N7	सं8 N8	सं9 N9	सं10 N10	सं11 N11	सं12 N12	रेखिक अनुपात SCALE		N.T.S		आरेखण संख्या DRAWING NO.	
Rz		0.16-0.3	0.5-0.7	0.9-1.1	1.5-2.0	2.5-3.8	5.0-6.3	9.0-12	16-25	30-40	50-63	75-100	160-250					CLW/ES/3/SK-3/0052/E	
Ra μm		0.025	0.05	0.1	0.2	0.4	0.8	1.6	3.2	6.3	12.5	25	50	संदर्भ / REF.					
चिन्ह SYMBOL														ALT.-					
																परिवर्तन संख्या ALTERATION. NO.		पर्ण SHEET 8 OF 8	
																		A4	