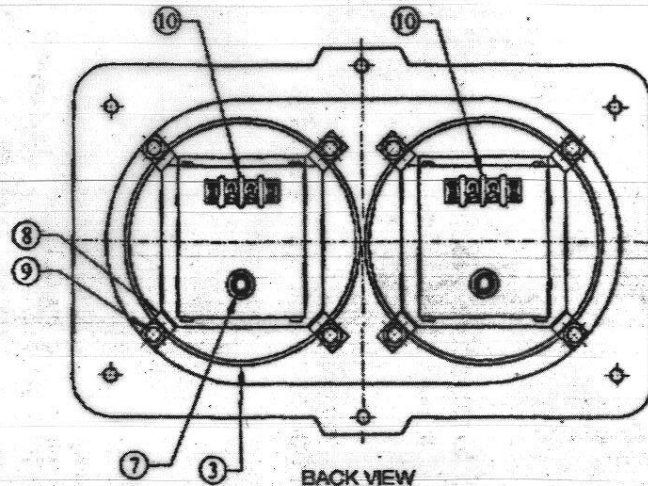
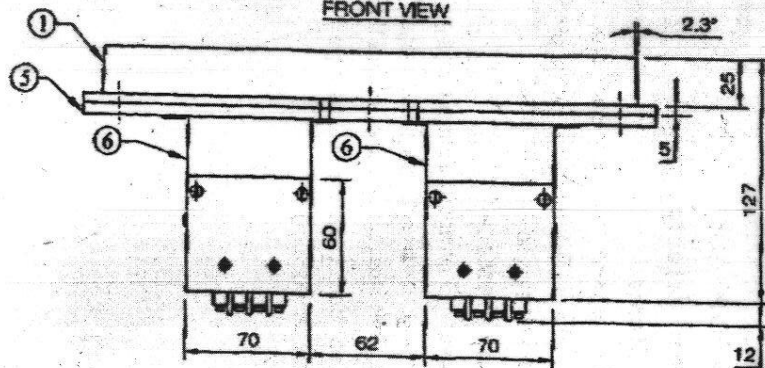


FRONT VIEW



BACK VIEW



BOTTOM VIEW

Item No.	Description / Dimension	Material	Qty
10	DMC Connector 2 Pin	DMC mold	02
9	Hex Bolt 5 X 12mm, Washer, Spring washer	SS	08 Nos each
8	Lamp fixing clamp	MS	08
7	Fuse holder 4.5 A	2A fuse	02
6	Marker light cabinet 01 No Red & 01 No Gray	MS Sheet	02
5	Mounting gasket	rubber	01
4	LED used 20 Nos Red & 20 Nos white	Nichia/Avago	40
3	Round Gasket	rubber	02
2	Glass 5 mm Thick	Toughened	02
1	Mounting Frame	Aluminium	01

1. Aluminum front cover thickness 5mm.
2. Aluminum front cover can be mounted from front side of loco with the help of 6 Nos Nut/Bolt of dia 6mm.
3. 6 Nos Nut/Bolt/washer/spring washer of dia 6x50mm to be supplied by the firm.
4. This Drg. is applicable in lieu of Existing Drg. in sheet no. 24, Annexure - A.

DRN. CHKD. AEE/SEE

SPECIFICATION FOR LED MARKER LIGHT

31/2/2011
6/9/2011
BY, CEE. (D)

CHITTARANJAN LOCOMOTIVE WORKS
WEST BENGAL, INDIA
SPEC NO - CLW/ES/SK-1/629 AL.T.
DATE: 06-09-2011