

TENDER SPECIFICATION

No. CLW/ES/S - 31/ABC

ENCLOSURE:

1. DRG No. CLW/ES/SK-1/S-31/ABC
2. DRG No. CLW/ES/SK-2/S-31/ABC
3. DRG No. CLW/ES/SK-3/S-31/ABC
4. DRG No. CLW/ES/SK-4/S-31/ABC
5. DRG No. CLW/ES/SK-5/S-31/ABC
6. DRG No. CLW/ES/SK-6/S-31/ABC
7. DRG. NO. CLW/ES/SK-7/S-31/ABC

TOTAL No. OF SHEETS IN THIS SPECIFICATION

ALT.	-	A	B	C						
SHEETS	16	17	17	17						

**SPECIFICATION FOR B.L. SWITCH BOX
FOR
25KV AC ELECTRIC LOCOMOTIVES
CLASS : WAG-7, WAP-4**

ISSUED BY
DY. CHIEF ELECTRICAL ENGINEER - I
CHITTARANJAN LOCOMOTIVE WORKS
P.O : CHITTARANJAN - 713331
DISTT - BURDWAN, WEST BENGAL, INDIA

**THIS SPECIFICATION SUPERSEDES EARLIER SPECIFICATION
NO. CLW/ES/S-5/0.**

जांचा
CHKD

आरेखित
DRN.

**SPECIFICATION FOR
B.L. SWITCH BOX**

Amee
16/12
उप.मु.वि.अ. (अभि.)
DY. CEE. (D)

चिन्नरंजन रेल इंजन कारखाना
पश्चिम बंगाल, भारत

CHITTARANJAN LOCOMOTIVE WORKS
WEST BENGAL, INDIA

क्रमांक/NO. CLW/ES/S-31/ABC
दिनांक/DATE : 16-12-2002

ALTERATION SHEET

ALT. No.	DATE	DESCRIPTION	SIGNATURE	REMARKS
A	10.6.03	Sheet No. 9A introduced for inclusion of clause 14.0, 15.0 and 16.0 as special condition, Marking and Make respectively.	<i>He</i> 10/6/03	
B	18.4.07	In sheet no. 10, ① Name Plate of BLSN description wrongly mentioned as BLSN-NATURAL SECTION is rectified as BLSN-NEUTRAL SECTION. ② BLRA Limit switch is changed from 1N/0+1N/C to 1N/0+2N/C as 3-phase type Cab heater/ventilation is introduced in WAG-7, WAP-4 Crew friendly Locomotives.	<i>Shri</i> 23/4/7	
C	10.6.08	In sheet No-10 BLRA Limit switch is change from 1N0+2NC to 2N0+1NC as 3 phase type Cab heater/ventilation in WAG-7, WAP-4 Crew friendly Cab Tap Changer type Locomotive is introduced. This has the approval of CEE/LoCo. vide Letter NO. ELDD/3256/SKG. dated 29/5/08	<i>1</i> 10/6/08	

जांचा
CHKD

अंशित
DRN.

**SPECIFICATION FOR
B. L. SWITCH BOX**

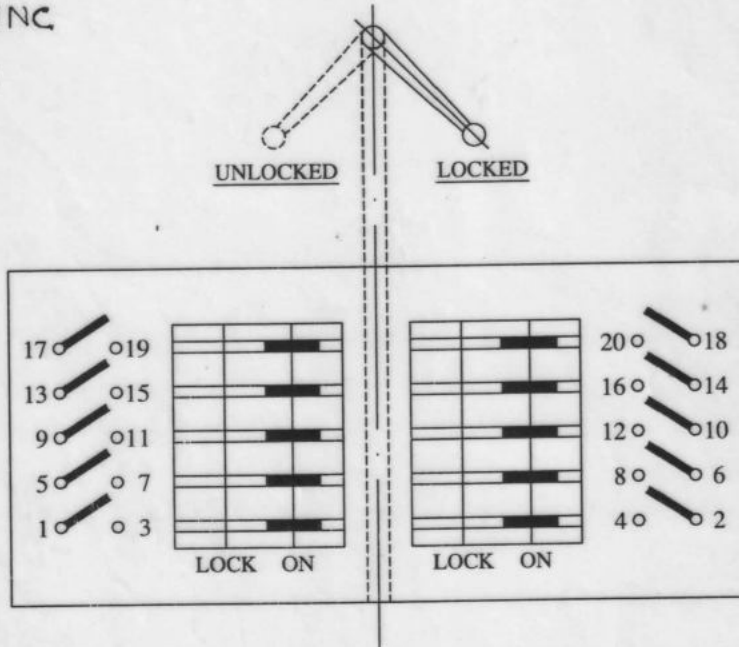
Chinn
उप.मु.वि.अ. (अभि.)
DY. CEE. (D)

चित्तरंजन रेल इंजन कारखाना
पश्चिम बंगाल, भारत
CHITTARANJAN LOCOMOTIVE WORKS
WEST BENGAL, INDIA
क्रमांक/NO. **CLW/ES/S-31/A/C**
दिनांक/DATE : **16-12-2002**

BLDJ 2NO+1NC	BLRDJ 1NO+1NC SPRING LOADED	BLSN		2NO+1NC	BLCP 2NO+1NC	BLCPD 1NO+1NC	BLVMT 1NO+1NC
		1NO+2NC	1NO+1NC				
1NO+1NC 1NO+2NC	1NO+1NC SPRING LOADED	BLZLF 1NO+1NC	BLLM 1NO+1NC	BLPRR 2NO+1NC	BLPRF 2NO+1NC	BLPR(D) 1NO+1NC	BLLF 2NO+1NC

SWITCH PROGRAMME OF LIMIT SWITCH

Alt. (B)
2NO+1NC
Alt. (C)



SIMILAR TO K1385 - 25 SWITCH OF
M/s. SIEMENS

ALT. (B)

BLDJ H.V. CIRCUIT BREAKER	BLRDJ CIRCUIT BREAKER RESET	BLSN		BLCP COMPRESSOR AUTOMATIC	BLCPD COMPRESSOR DIRECT	BLVMT BLOWERS	
		NEUTRAL SECTION					
BLRA CAB HEATER		BLZLF MARKED RED	BLLM COMPARTMENT LIGHTS	BLPRR REAR HEAD LIGHT	BLPRF FRONT HEAD LIGHT	BLPR(D) HEAD LIGHT DIMMED	BLLF DRIVER'S DESK LAMP INSTRUMENT

DETAILS OF NAME PLATE

AE
AEE/D
CHKD.
DRN.
Amaitra

B. L. KEY SOCKET &
PROGRAMME SWITCH
SHAFT SECTION

Penetr
15/12
DY.CEE(D)

CHITTARANJAN LOCOMOTIVE WORKS
WEST BENGAL, INDIA.

NO. SK. NO. CLW/ES/SK-1/S-31/AB,C
DATE: 16-12-2002