

- NOTE:-A
1. SEAL WELD TO BE DONE TO AVOID WATER LEAKAGE.
  2. VERTICALITY OF TROUGH REF. NO. 2,3 AND 4 TO BE MAINTAINED WITH TROUGH REF. NO. 1.
  3. RECTANGULAR SHAPE & DIAGONAL DIMENSIONS TO BE MAINTAINED.
  4. THIS STAINLESS STEEL ITEM SHOU'D BE POLISHED, FREE FROM BLEMISHES ANY BURN MARK ETC.
  5. VERTICALITY AND PARALLELITY OF M8 CSK SCREW TO BE MAINTAINED FOR FIXING AIR CONDITION MACHINE UNIT WITH TROUGH.

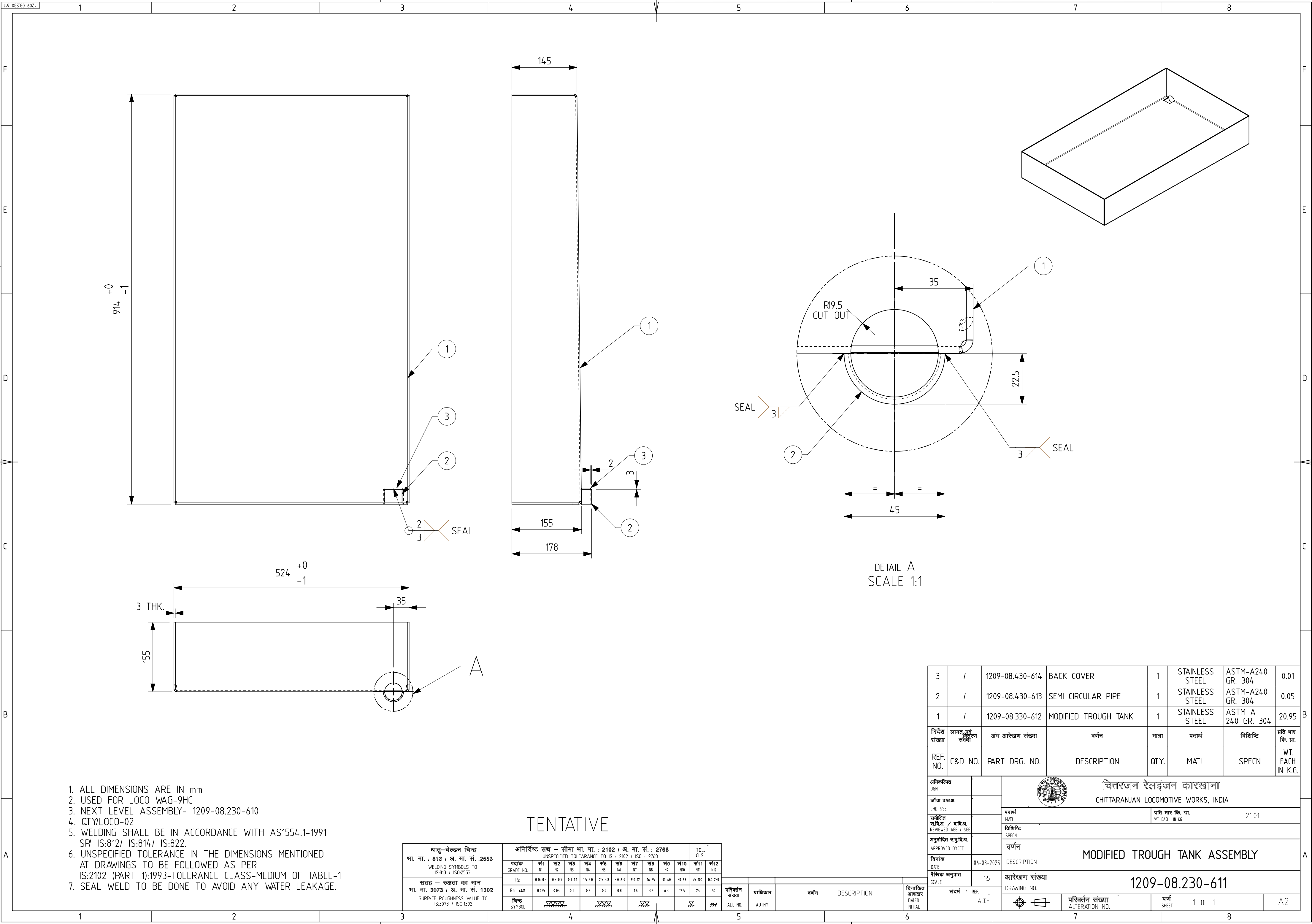
- NOTE:-B
1. ALL DIMENSIONS ARE IN mm
  2. USED FOR LOCO WAG-9HC ; WAP-7 & WAP-5
  3. UNSPECIFIED TOLERANCE IN THE DIMENSIONS MENTIONED AT DRAWINGS TO BE FOLLOWED AS PER IS:2102 (PART 1):1993-TOLERANCE CLASS-MEDIUM OF TABLE-1
  4. NEXT LEVEL ASSEMBLY- 1209-08.030-512
  5. QTY/LOCO-02
  6. WELDING SHALL BE IN ACCORDANCE WITH AS1554.1-1991 SP/ IS:812/ IS:814/ IS:822.

5	/	1209-08.430-615	BEND DRAIN PIPE FOR CAB A/C TROUGH	1	STAINLESS STEEL	ASTM A-269 GR.304	0.70
4	/	1209-08.230-611	MODIFIED TROUGH TANK ASSEMBLY	1			21.01
3	/	1209-08.330-521	TROUGH VENT MIDDLE	1	STAINLESS STEEL	ASTM-A240 GR. 304	5.76
2	/	1209-08.430-520	TROUGH VENT FRONT	1	STAINLESS STEEL	ASTM A 240 GR. 304	6.01
1	/	1209-08.430-519	TROUGH TOP PLATE ASSEMBLY	1			10.52
निर्देश संख्या	लागत/संख्या	अंग आरेखण संख्या	वर्णन	मात्रा	पदार्थ	विशिष्ट	प्रति भाग कि. ग्रा.
REF. NO.	C&D NO.	PART DRG. NO.	DESCRIPTION	QTY.	MATL	SPECN	WT. EACH IN K.G.

अधिकृत DGN		चित्तारंजन रेलइंजन कारखाना CHITTARANJAN LOCOMOTIVE WORKS, INDIA					
जीवा व.अ.अ. CHD SSE		परामर्श MAIL	प्रति भाग कि. ग्रा. 44.00				
समीक्षित स.वि.अ. / व.वि.अ. REVIEWED AEE / SEE		विशिष्ट SPECN					
अनुमोदित चक्रवि.अ. APPROVED DYCEE		वर्णन	MODIFIED CAB A/C TROUGH TANK ASSEMBLY WITH DRAIN PIPE				
दिनांक DATE	06-03-2025	DESCRIPTION					
SCALE	1:5	आरेखण संख्या	1209-08.230-610				
संदर्भ / REF. ALT-		परिवर्तन संख्या ALTERATION NO.	पर्ण SHEET	1 OF 1	A2		

TENTATIVE


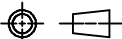




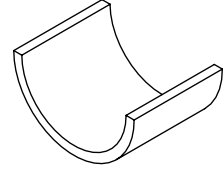
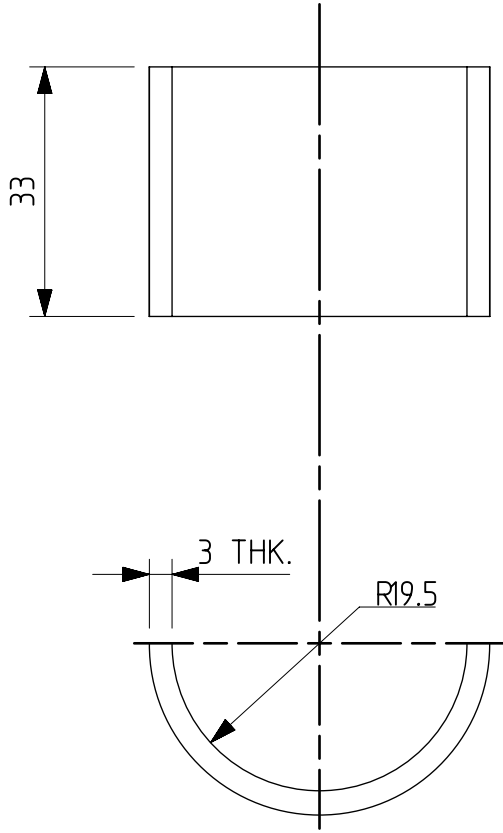
1. ALL DIMENSIONS ARE IN mm
2. USED FOR LOCO WAG-9HC
3. NEXT LEVEL ASSEMBLY- 1209-08.230-610
4. QTY/LOCO-02
5. WELDING SHALL BE IN ACCORDANCE WITH AS1554.1-1991  
SP1 IS:812/ IS:814/ IS:822.
6. UNSPECIFIED TOLERANCE IN THE DIMENSIONS MENTIONED  
AT DRAWINGS TO BE FOLLOWED AS PER  
IS:2102 (PART 1):1993-TOLERANCE CLASS-MEDIUM OF TABLE-1
7. SEAL WELD TO BE DONE TO AVOID ANY WATER LEAKAGE.

धातु-वेल्डन चिन्ह मा. मा. : 813 / अ. मा. सं. :2553 WELDING SYMBOLS TO IS:813 / ISO:2553	अनिर्दिष्ट सद्य - सीमा मा. मा. : 2102 / अ. मा. सं. : 2768 UNSPECIFIED TOLERANCE TO IS : 2102 / ISO : 2768												TOL. CLS.
	पदांक GRADE NO.	सं1 N1	सं2 N2	सं3 N3	सं4 N4	सं5 N5	सं6 N6	सं7 N7	सं8 N8	सं9 N9	सं10 N10	सं11 N11	सं12 N12
	Rz	0.16-0.3	0.5-0.7	0.9-1.1	1.5-2.0	2.5-3.8	5.0-6.3	9.0-12	16-25	30-40	50-63	75-100	160-250
	Ra $\mu$ m	0.075	0.05	0.1	0.2	0.4	0.8	1.6	3.2	6.3	12.5	25	50
सतह - रुक्षता का मान मा. मा. 3073 / अ. मा. सं. 1302 SURFACE ROUGHNESS VALUE TO IS:3073 / ISO:1302	चिन्ह SYMBOL												

परिवर्तन संख्या ALT. NO.	प्राधिकार AUTHY	वर्णन DESCRIPTION	दिनांकित DATED INITIAL
-----------------------------	--------------------	----------------------	---------------------------




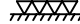
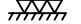
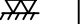



3	/	1209-08.430-614	BACK COVER	1	STAINLESS STEEL	ASTM-A240 GR. 304	0.01
2	/	1209-08.430-613	SEMI CIRCULAR PIPE	1	STAINLESS STEEL	ASTM-A240 GR. 304	0.05
1	/	1209-08.330-612	MODIFIED TROUGH TANK	1	STAINLESS STEEL	ASTM A 240 GR. 304	20.95
निर्देश संख्या	लागत एवं वितरण संख्या	अंग आरेखण संख्या	वर्णन	मात्रा	पदार्थ	विशिष्टि	प्रति भार कि. ग्रा.
REF. NO.	C&D NO.	PART DRG. NO.	DESCRIPTION	QTY.	MATL	SPECN	WT. EACH IN K.G.
अधिकृतित DGN		<div></div> <div>चितरंजन रेलइंजन कारखाना CHITTARANJAN LOCOMOTIVE WORKS, INDIA</div>					
सौधा व.अ.अ. CHD SSE							
समीक्षित स.वि.अ. / व.वि.अ. REVIEWED AEE / SEE		पदार्थ MATL		प्रति भार कि. ग्रा. WT. EACH IN KG		21.01	
अनुमोदित उ.पु.वि.अ. APPROVED DYCEE		विशिष्टि SPECN					
दिनांक DATE		वर्णन		MODIFIED TROUGH TANK ASSEMBLY			
06-03-2025		DESCRIPTION					
दृष्टिक अनुपात SCALE		आरेखण संख्या		1209-08.230-611			
1:5		DRAWING NO.					
संदर्भ / REF.		परिवर्तन संख्या ALTERATION NO.		पृष्ठ SHEET		1 OF 1	
A.L.T.-						A2	

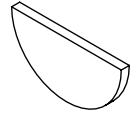
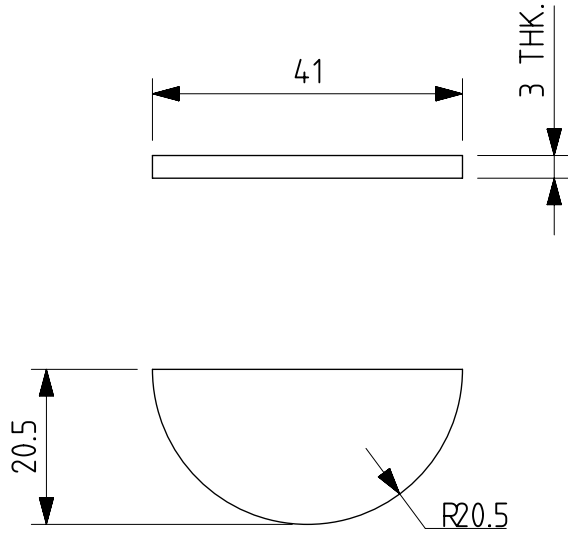




1. ALL DIMENSIONS ARE IN mm
2. C&D NO. -
3. QTY./LOCO: 2 NOS.
4. NEXT LEVEL ASSEMBLY DRG. NO.: 1209-08.330-611
5. USED FOR LOCO- WAG9HC, WAP-7
6. UNSPECIFIED TOLERANCE IN THE DIMENSIONS MENTIONED AT DRAWINGS TO BE FOLLOWED AS PER IS:2102(PART 1):1993-TOLERANCE CLASS-MEDIUM OF TABLE-1


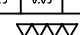
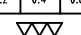
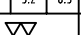
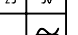
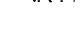
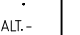
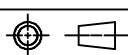
TENTATIVE

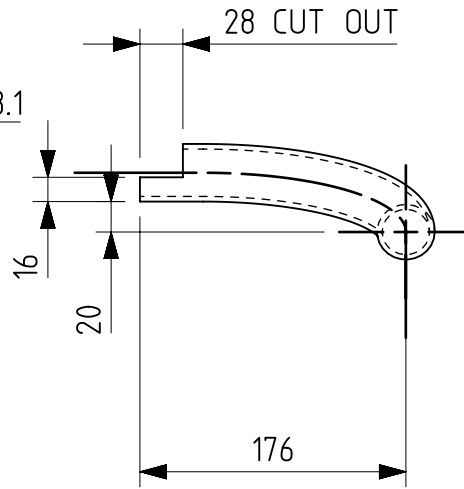
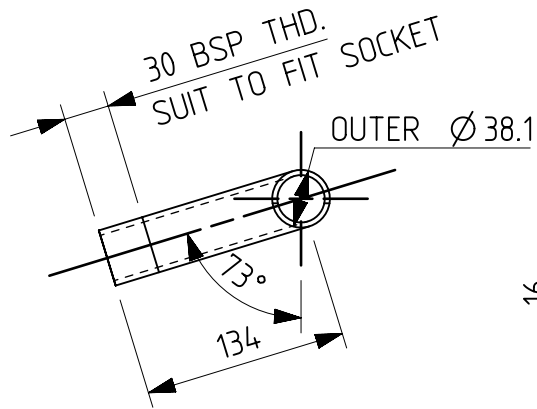
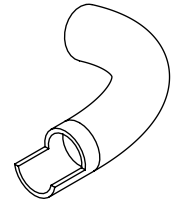
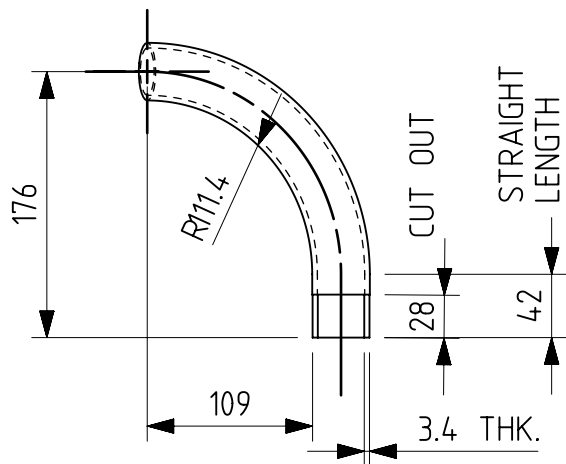
TENTATIVE												अभिकल्पित DGN		 चित्तरंजन रेलइंजन कारखाना CHITTARANJAN LOCOMOTIVE WORKS, INDIA						
												जॉचा व.अ.अ. CHD SSE								
परिवर्तन संख्या ALT.NO.	प्राधिकार AUTHY	वर्णन DESCRIPTION								दिनांकित बाह्य DATED INITIAL	समीक्षित स.वि.अ. / व.वि.अ. REVIEWED AEE / SEE	पदार्थ MATL	STAINLESS STEEL	प्रति भार कि. ग्रा. WT. EACH IN KG	.05					
सतह — रूखाता का मान मा. मा. 3073 / अ. मा. सं. 1302 SURFACE ROUGHNESS VALUE TO IS:3073 / ISO:1302		अनिर्दिष्ट सद्य — सीमा मा. मा. : 2102 / अ. मा. सं. : 2768 UNSPECIFIED TOLERANCE TO IS : 2102 / ISO : 2768								TOL. CLS.	अनुमोदित स.पु.वि.अ. APPROVED DYCEE	विशिष्ट SPECN	ASTM-A240 GR. 304							
		धातु-वेल्डन चिन्ह मा. मा. : 813 / अ. मा. सं. : 2553 WELDING SYMBOLS TO IS:813 / ISO:2553									दिनांक DATE	वर्णन DESCRIPTION	SEMI CIRCULAR PIPE							
पदांक GRADE NO.	सं1 N1	सं2 N2	सं3 N3	सं4 N4	सं5 N5	सं6 N6	सं7 N7	सं8 N8	सं9 N9	सं10 N10	सं11 N11	सं12 N12	रैखिक अनुपात SCALE	1:1	आरेखण संख्या DRAWING NO.	1209-08.430-613				
Rz	0.16-0.3	0.5-0.7	0.9-1.1	1.5-2.0	2.5-3.8	5.0-6.3	9.0-12	16-25	30-40	50-63	75-100	160-250	संदर्भ / REF.			 	परिवर्तन संख्या ALTERATION. NO.	पर्ण SHEET	1 OF 1	A4
Ra $\mu m$	0.025	0.05	0.1	0.2	0.4	0.8	1.6	3.2	6.3	12.5	25	50	ALT. -							
चिन्ह SYMBOL																				



1. ALL DIMENSIONS ARE IN mm
2. C&D NO. -
3. QTY./LOCO: 2 NOS.
4. NEXT LEVEL ASSEMBLY DRG. NO.: 1209-08.330-611
5. USED FOR LOCO- WAG9HC, WAP-7
6. UNSPECIFIED TOLERANCE IN THE DIMENSIONS MENTIONED AT DRAWINGS TO BE FOLLOWED AS PER IS:2102(PART 1):1993-TOLERANCE CLASS-MEDIUM OF TABLE-1








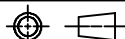
TENTATIVE

TENTATIVE													अभिकल्पित DGN			चितरंजन रेलइंजन कारखाना CHITTARANJAN LOCOMOTIVE WORKS, INDIA										
													जॉचा व.अ.अ. CHD SSE													
परिवर्तन संख्या ALT.NO.	प्राधिकार AUTHY		वर्णन DESCRIPTION								दिनांकित बाह्य DATED INITIAL	समीक्षित स.वि.अ. / व.वि.अ. REVIEWED AEE / SEE	पदार्थ MATL		STAINLESS STEEL		प्रति भार कि. ग्रा. WT. EACH IN KG		.01							
सतह — रूखाता का मान भा. मा. 3073 / अ. मा. सं. 1302 SURFACE ROUGHNESS VALUE TO IS:3073 / ISO:1302			अनिर्दिष्ट सघ — सीमा भा. मा. : 2102 / अ. मा. सं. : 2768 UNSPECIFIED TOLERANCE TO IS : 2102 / ISO : 2768								TOL. CLS.	अनुमोदित स.यु.वि.अ. APPROVED DYCEE	विशिष्ट SPECN		ASTM-A240 GR. 304											
			धातु-वेल्डन चिन्ह भा. मा. : 813 / अ. मा. सं. : 2553 WELDING SYMBOLS TO IS:813 / ISO:2553									दिनांक DATE	वर्णन DESCRIPTION		BACK COVER											
पदांक GRADE NO.	सं1 N1	सं2 N2	सं3 N3	सं4 N4	सं5 N5	सं6 N6	सं7 N7	सं8 N8	सं9 N9	सं10 N10	सं11 N11	सं12 N12	रैखिक अनुपात SCALE	1:1		आरेखण संख्या DRAWING NO.		1209-08.430-614								
Rz	0.16-0.3	0.5-0.7	0.9-1.1	1.5-2.0	2.5-3.8	5.0-6.3	9.0-12	16-25	30-40	50-63	75-100	160-250														
Ra $\mu m$	0.025	0.05	0.1	0.2	0.4	0.8	1.6	3.2	6.3	12.5	25	50														
चिन्ह SYMBOL													संदर्भ / REF.		ALT. -				परिवर्तन संख्या ALTERATION. NO.		पर्ण SHEET		1 OF 1		A4	

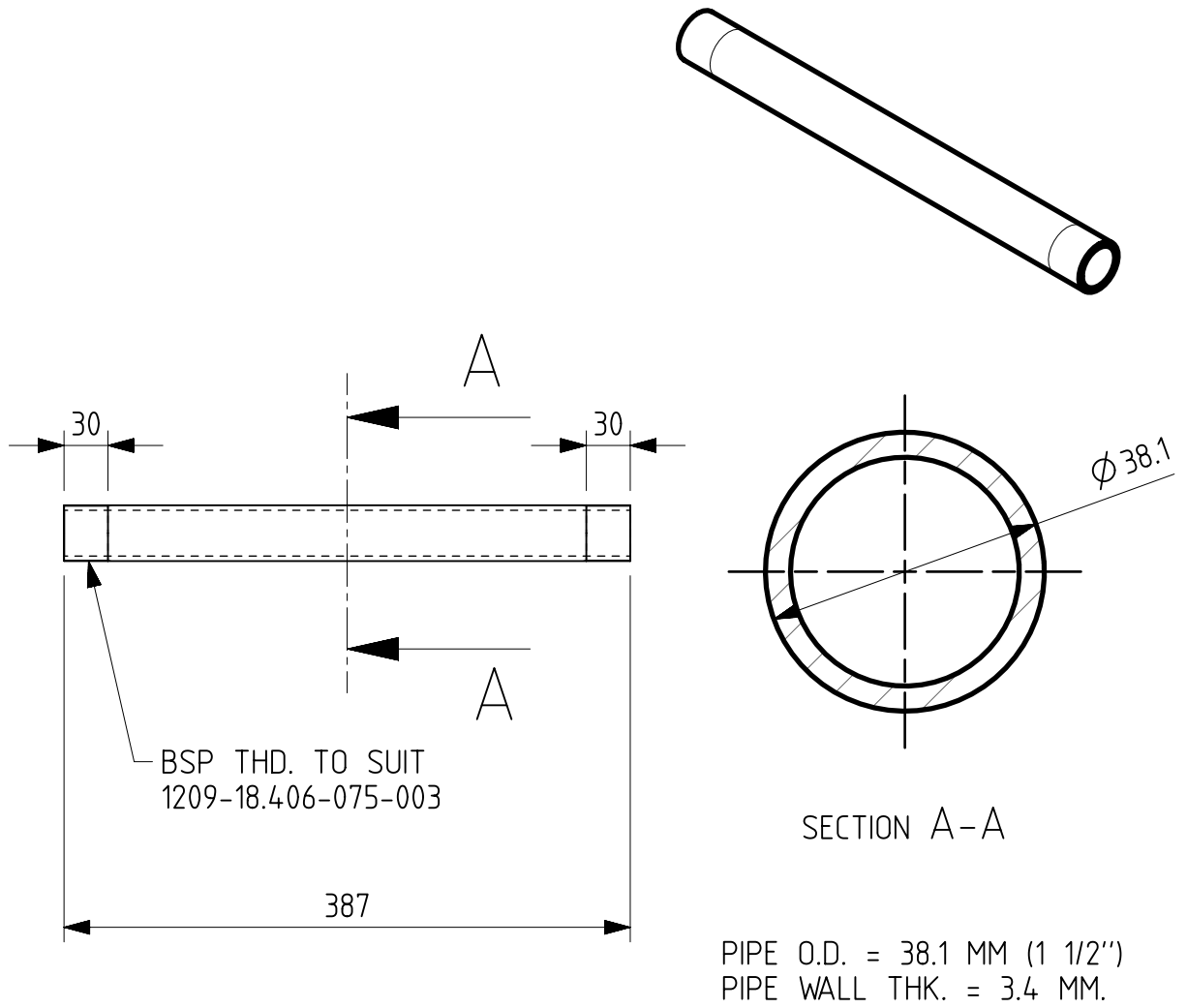


1. ALL DIMENSIONS ARE IN mm
2. NEXT LEVEL ASSEMBLY DRG. NO.1209-08.230-610
3. USED FOR LOCO-WAG-9HC,WAP-7 & WAP-5
4. QTY./LOCO:02
5. UNSPECIFIED TOLERANCE IN THE DIMENSIONS MENTIONED AT DRAWINGS TO BE FOLLOWED AS PER IS:2102(PART 1):1993-TOLERANCE CLASS-MEDIUM OF TABLE-1

TENTATIVE


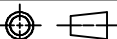
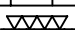
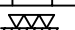
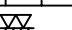
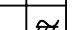

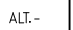
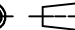
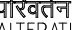

TENTATIVE													अभिकल्पित DGN		 चिततरंजन रेलइंजन कारखाना CHITTARANJAN LOCOMOTIVE WORKS, INDIA				
													जॉचा व.अ.अ. CHD SSE						
परिवर्तन संख्या ALT.NO.	प्राधिकार AUTHY	वर्णन DESCRIPTION										दिनांकित बाह्य DATED INITIAL	समीक्षित स.वि.अ. / व.वि.अ. REVIEWED AEE / SEE	पदार्थ MATL	STAINLESS STEEL	प्रति भार कि. ग्रा. WT. EACH IN KG	0.70		
सतह - रूखाता का मान मा. मा. 3073 / अ. मा. सं. 1302 SURFACE ROUGHNESS VALUE TO IS:3073 / ISO:1302		अनिर्दिष्ट सद्य - सीमा मा. मा. : 2102 / अ. मा. सं. : 2768 UNSPECIFIED TOLERANCE TO IS : 2102 / ISO : 2768										TOL. CLS.	अनुमोदित स.यु.वि.अ. APPROVED DYCEE	विशिष्ट SPECN	ASTM A 269, GR.304				
		धातु-वेल्डन चिन्ह मा. मा. : 813 / अ. मा. सं. : 2553 WELDING SYMBOLS TO IS:813 / ISO:2553											दिनांक DATE	06-03-2025	वर्णन DESCRIPTION	BEND DRAIN PIPE FOR CAB A/C TROUGH			
पदांक GRADE NO.	सं1 N1	सं2 N2	सं3 N3	सं4 N4	सं5 N5	सं6 N6	सं7 N7	सं8 N8	सं9 N9	सं10 N10	सं11 N11	सं12 N12	रेखिक अनुपात SCALE	1:5	आरेखण संख्या DRAWING NO.	1209-08.430-615			
Rz	0.16-0.3	0.5-0.7	0.9-1.1	1.5-2.0	2.5-3.8	5.0-6.3	9.0-12	16-25	30-40	50-63	75-100	160-250							
Ra μm	0.025	0.05	0.1	0.2	0.4	0.8	1.6	3.2	6.3	12.5	25	50							
चिन्ह SYMBOL														संदर्भ / REF. ALT.-		परिवर्तन संख्या ALTERATION. NO.	पृष्ठ SHEET	1 OF 1	A4



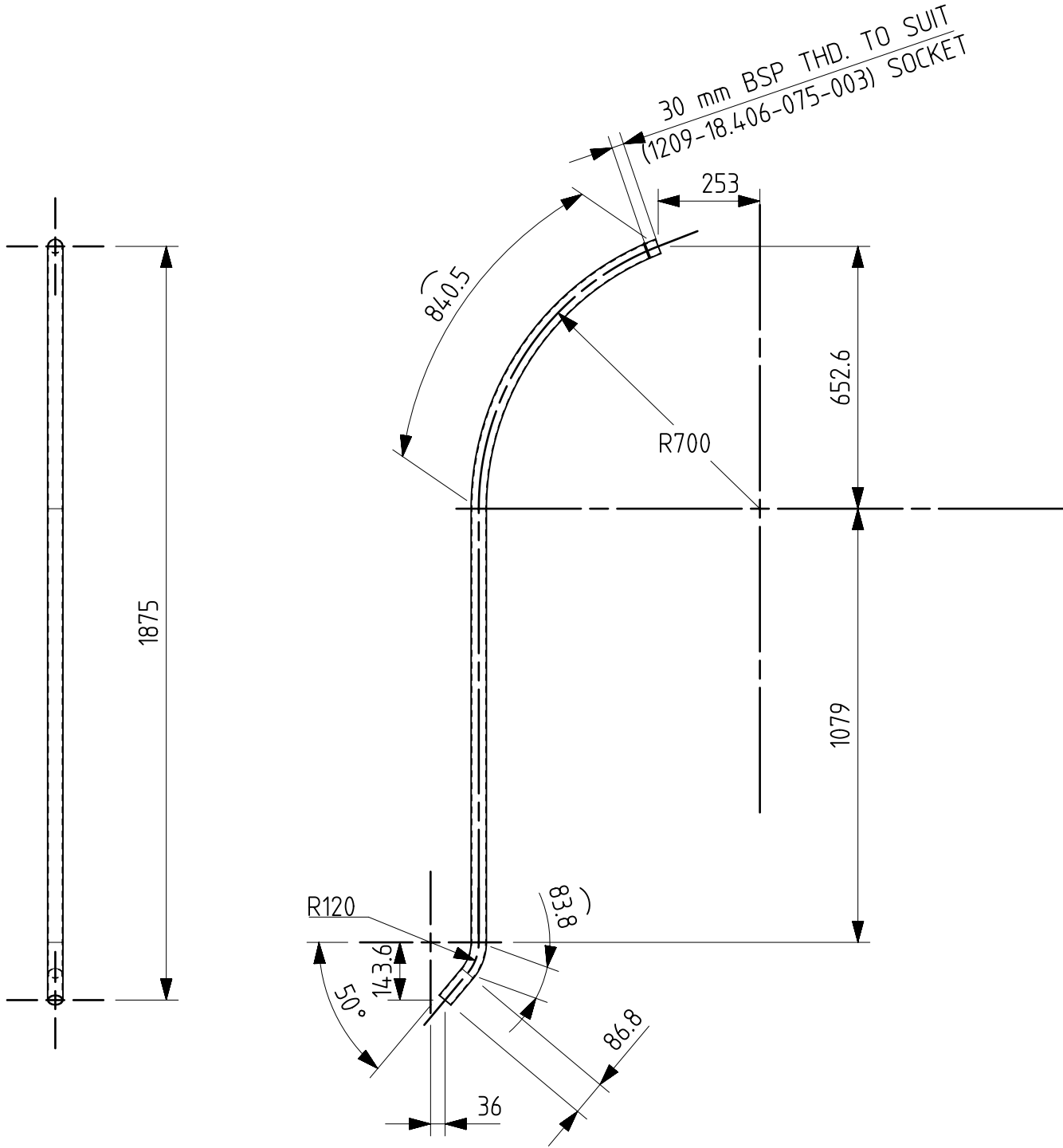
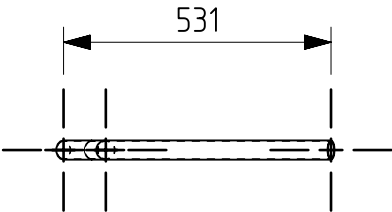


1. ALL DIMENSIONS ARE IN mm
2. NEXT LEVEL ASSEMBLY DRG. NO.1209-08.130-511
3. USED FOR LOCO-WAG-9HC,WAP-7 & WAP-5
4. QTY./LOCO:02
5. UNSPECIFIED TOLERANCE IN THE DIMENSIONS MENTIONED AT DRAWINGS TO BE FOLLOWED AS PER IS:2102(PART 1):1993-TOLERANCE CLASS-MEDIUM OF TABLE-1

TENTATIVE

TENTATIVE													अधिकल्पित DGN				चितरंजन रेलइंजन कारखाना CHITTARANJAN LOCOMOTIVE WORKS, INDIA																				
													जॉचा व.अ.अ. CHD SSE				पदार्थ MATL		STAINLESS STEEL		प्रति भार कि. ग्रा. WT. EACH IN KG		1.12														
परिवर्तन संख्या ALT.NO.		प्राधिकार AUTHY		वर्णन DESCRIPTION							दिनांकित बाह्य DATED INITIAL		समीक्षित स.वि.अ. / व.वि.अ. REVIEWED AEE / SEE				विशिष्ट SPECN		ASTM A 269, GR.304																		
सतह - रूखाता का मान मा. 3073 / अ. मा. सं. 1302 SURFACE ROUGHNESS VALUE TO IS:3073 / ISO:1302				अनिर्दिष्ट सद्य - सीमा मा. मा. : 2102 / अ. मा. सं. : 2768 UNSPECIFIED TOLERANCE TO IS : 2102 / ISO : 2768							TOL. CLS.		अनुमोदित स.मु.वि.अ. APPROVED DYCEE				05-03-2025		वर्णन DESCRIPTION		CONNECTING DRAIN PIPE																
				धातु-वेल्डन चिन्ह मा. मा. : 813 / अ. मा. सं. : 2553 WELDING SYMBOLS TO IS:813 / ISO:2553									दिनांक DATE		रेखिक अनुपात SCALE				1:5		आरेखण संख्या DRAWING NO.		1209-07.432-156														
पदांक GRADE NO.		सं1 N1		सं2 N2		सं3 N3		सं4 N4		सं5 N5		सं6 N6		सं7 N7		सं8 N8		सं9 N9		सं10 N10		सं11 N11		सं12 N12		संदर्भ / REF.  ALT. -				परिवर्तन संख्या ALTERATION. NO.		पर्ण SHEET		1 OF 1		A4	
Rz		0.16-0.3		0.5-0.7		0.9-1.1		1.5-2.0		2.5-3.8		5.0-6.3		9.0-12		16-25		30-40		50-63		75-100		160-250													
Ra μm		0.025		0.05		0.1		0.2		0.4		0.8		1.6		3.2		6.3		12.5		25		50													
चिन्ह SYMBOL																																					

SURFACE ROUGHNESS Ra VALUES IN  $\mu\text{m}$



NOTE:-

PIPE LENGTH = 2.10 M (APPROX.)  
PIPE O.D. = 38.1 MM (1 1/2")  
PIPE WALL THK. = 3.404 MM.

1. ALL DIMENSIONS ARE IN mm
2. NEXT LEVEL ASSEMBLY DRG. NO.1209-08.130-511
3. USED FOR LOCO-WAG-9HC,WAP-7 & WAP-5
4. QTY./LOCO:02
5. UNSPECIFIED TOLERANCE IN THE DIMENSIONS MENTIONED AT DRAWINGS TO BE FOLLOWED AS PER IS:2102(PART 1):1993-TOLERANCE CLASS-MEDIUM OF TABLE-1

धातु-वेल्डन चिन्ह भा. मा. : 813 / अ. मा. सं. :2553 WELDING SYMBOLS TO IS:813 / ISO:2553	अनिर्दिष्ट सद्य – सीमा भा. मा. : 2102 / अ. मा. सं. : 2768 UNSPECIFIED TOLERANCE TO IS : 2102 / ISO : 2768											TOL. CLS.	
	पदांक GRADE NO.	सं1 N1	सं2 N2	सं3 N3	सं4 N4	सं5 N5	सं6 N6	सं7 N7	सं8 N8	सं9 N9	सं10 N10	सं11 N11	सं12 N12
	Rz	0.16-0.3	0.5-0.7	0.9-1.1	1.5-2.0	2.5-3.8	5.0-6.3	9.0-12	16-25	30-40	50-63	75-100	160-250
सतह – रुक्षता का मान भा. मा. 3073 / अ. मा. सं. 1302 SURFACE ROUGHNESS VALUE TO IS:3073 / ISO:1302	Ra $\mu\text{m}$	0.025	0.05	0.1	0.2	0.4	0.8	1.6	3.2	6.3	12.5	25	50
	चिन्ह SYMBOL												

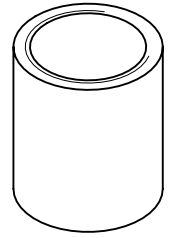
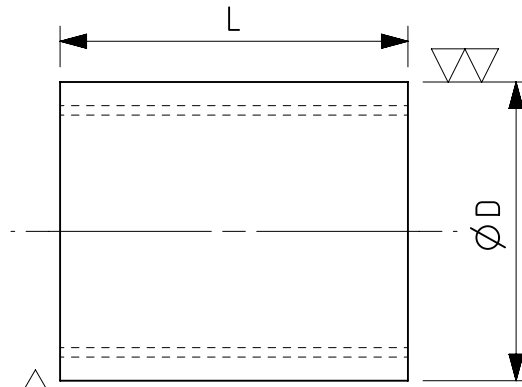
TENTATIVE

परिवर्तन संख्या ALT. NO.	प्राधिकार AUTHY	वर्णन DESCRIPTION
02	DY.CEE/D-III	OVERALL LENGTH CHANGED ,WALL THK. MODIFIED & DESCRIPTION CHANGED

दिनांकित DATED INITIAL
------------------------------

अधिकृत DGN		 चितरंजन रेलइंजन कारखाना CHITTARANJAN LOCOMOTIVE WORKS, INDIA	
जोचा व.अ.अ. CHD SSE			
समीक्षित स.वि.अ. / व.वि.अ. REVIEWED AEE / SEE		पदार्थ MATERIAL	STAINLESS STEEL
अनुमोदित च.यु.वि.अ. APPROVED DYCEE		प्रति भार कि. ग्रा. WT. EACH IN KG	1.60
दिनांक DATE	05-03-2025	विशिष्ट SPECN	ASTM A 269, GR.304
रैखिक अनुपात SCALE	1:15	वर्णन DESCRIPTION	TUBE SEAMLESS DIA 38.1 x 3.4 THK. <span>2</span>
संदर्भ / REF. ALT-		आरेखण संख्या DRAWING NO.	1209-07.332-149
		परिवर्तन संख्या ALTERATION NO.	02
		पृष्ठ SHEET	1 OF 1
			A3





6 7 QT Y/LOCO

2

PART NO.	SIZE BSP	NB (mm)	Ø D (mm)	L (mm)
1209-18.406-075-001	1"	25	39.5	46
-002	1-1/4"	32	49	51
-003	1-1/2"	40	56	51
-004	1/2"	15	27	37
-005	3/4"	20	32.5	39/120
-006	3/8"	10	22	29
-007	1-1/2"	40	56	340

SL. NO.	SIZE	WAG-9 NOS.	HOTEL LOAD WAP-7
1.	1"	15	15
2.	1-1/4"	4	4
3.	1-1/2"	10	7
4.	1/2"	18	18
5.	3/4"	2	2
6.	3/8"	6	6
7.	1-1/2"	-	3

NOTE:-

1. REMOVE ALL BURRS &amp; SHARP EDGES.

2. SOCKETS TO BE ZINC PLATED(10 MICRON)/PASSIVATED.

3. ALL DIMENSIONS ARE IN mm EXCEPT OTHERWISE STATED.

5. ITEM SL. NO. 1 TO 6 FOR WAG-9HC LOCO.

ITEM SL. NO. 1 TO 4 FOR WAP-5 LOCO.

6. ISO 228/1 FOR PARALLEL &amp; ISO 7/1 FOR TAPER THREADS.

7. SL.5 3/4" SOCKET WITH 120 mm LENGTH TO BE USED FOR WAP-4 LOCOS.

8. FOR ITEM 7 INTERNAL THREADS TO BE PROVIDED TO A LENGTH OF 30 MM FROM BOTH END ONLY.

9. USED FOR LOCOS: WAG-9HC, WAP-7 (HOTEL LOAD LOCO), WAP-5

ALL DIMENSIONS ARE IN mm

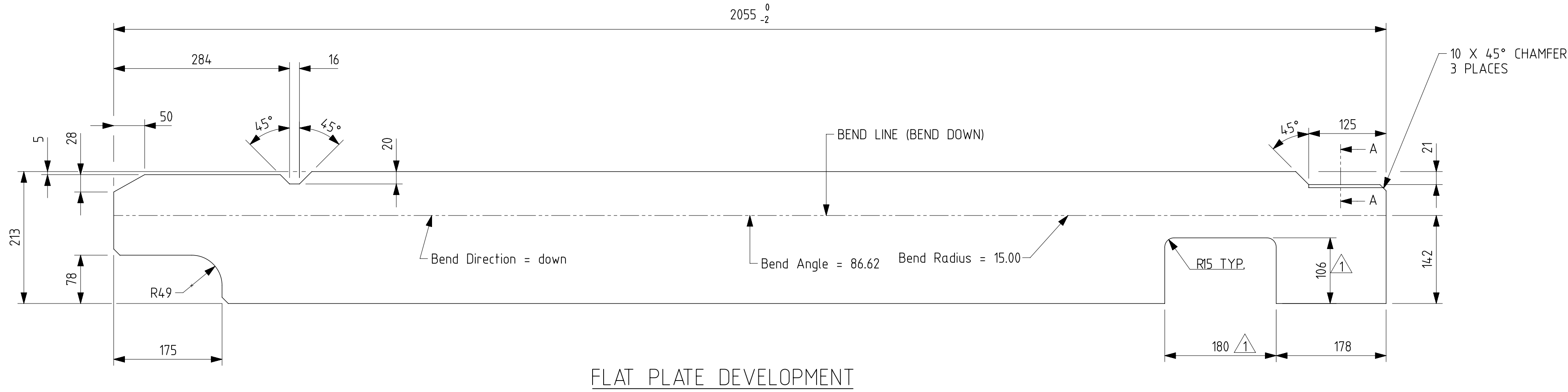
8  
5  
4  
3

9		REDRAWN IN NX WITH 3RD ANGLE PROJECTION.	30-07-20
8	DY.CEE/ D-I	REF. NO. 7, NOTE 8 AND QT Y/LOCO FOR HOTEL LOAD WAP-7 LOCO ADDED.	09-07-15
7	DY.CEE/ D-I	NOTE 7 AND WAP-4 CLASS OF LOCO ADDED	3-11-11
6	AME/D&D	QT Y/LOCO COLUMN & NOTE 6 ADDED.	03-06-02
5	AME/D&D	ITEM 6 & NOTE 5 ADDED. NOTE 4 DELETED.	24-08-00
4	AME/D&D	ITEM AT SL. NO. 5 ADDED. ITEM SL. AT 5 INCLUDED IN NOTE 4.	17-01-00
3	AME/D&D	NOTE 4 & SL. NO 3 & 4 ADDED.	27-05-99
2	AME/D&D	WAP-5 ADDED.REF NO. CHANGES TO SL. NO. NOTE 3 ADDED. NO/LOCO COL. DELETED.	12-04-99
1	AME/D&D	BSPP WAS BSP.	19-05-98

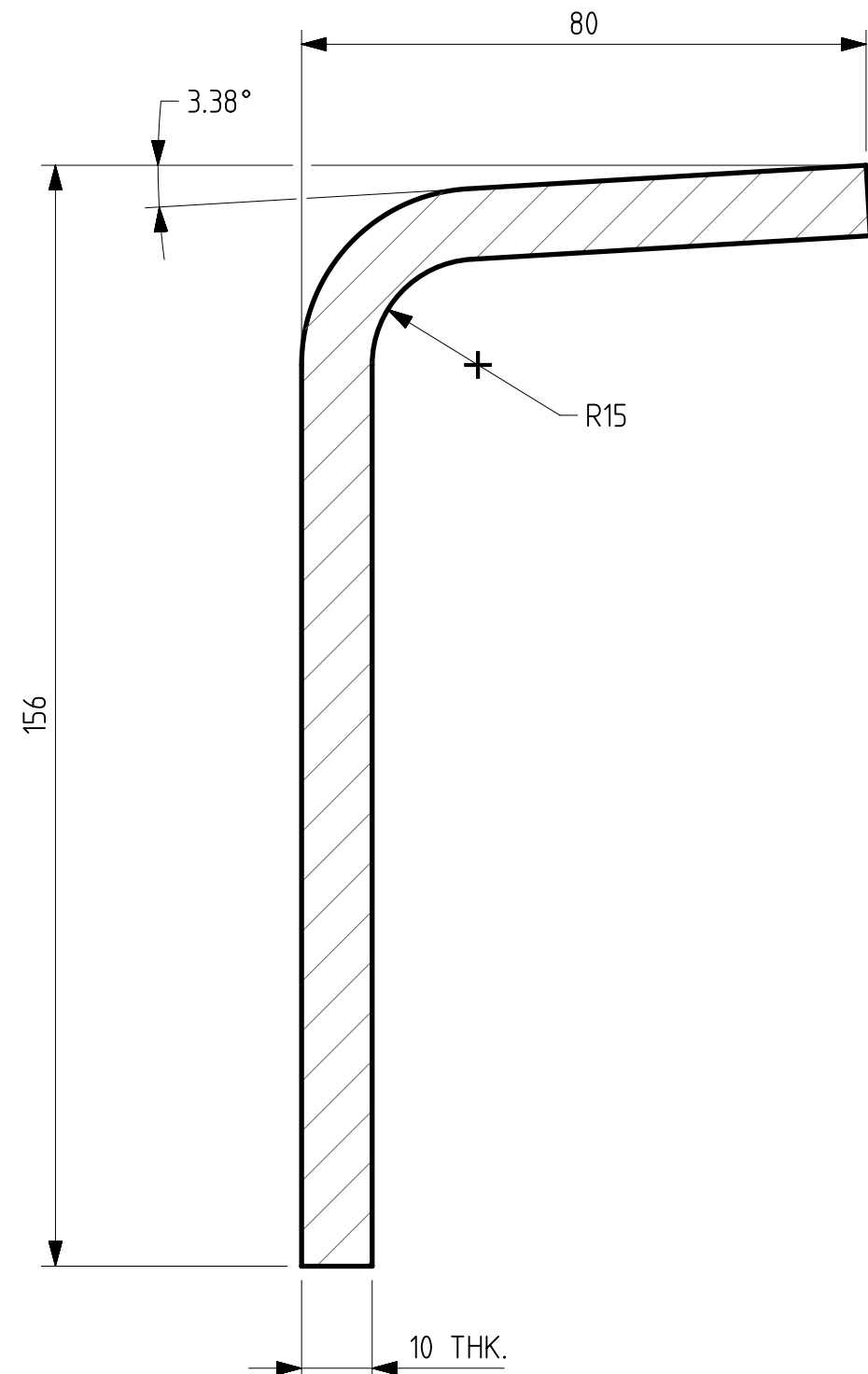
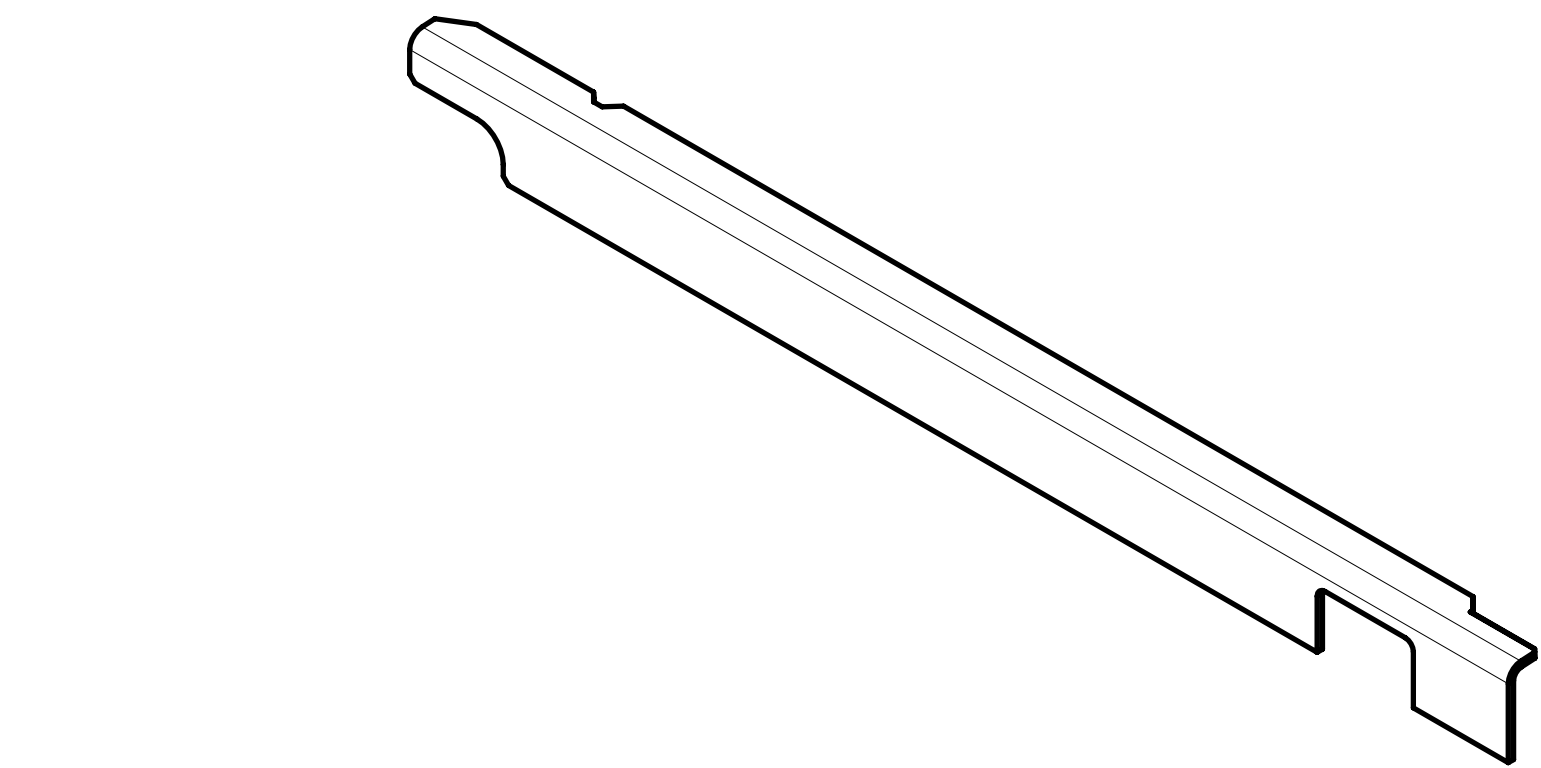
परिवर्तन संख्या	प्राधिकार	वर्णन	दिनांक
ALT.NO.	AUTHY	DESCRIPTION	INITIAL
सतह - रूखाता का मान मा. मा. 3073 / अ. मा. सं. 1302	अतिरिक्त सद्य - सीमा मा. मा. : 2102 / अ. मा. सं. : 2768	UNSPECIFIED TOLERANCE TO IS : 2102 / ISO : 2768	TOL. CLS.
SURFACE ROUGHNESS VALUE TO IS:3073 / ISO:1302	धातु-रेल्वन चिन्ह मा. मा. : 813 / अ. मा. सं. : 2553	WELDING SYMBOLS TO IS:813 / ISO:2553	
पदांक	सं1	सं2	सं3
GRADE NO.	N1	N2	N3
Rz	0.16-0.3	0.5-0.7	0.9-1.1
Ra	0.025	0.05	0.1
चिन्ह			
SYMBOL			

7	/		SOCKET 1-1/2"		STEEL	ASTM A108	
6	/		SOCKET 3/8"		STEEL	ASTM A108	
5	/		SOCKET 3/4"		STEEL	ASTM A108	
4	/		SOCKET 1/2"		STEEL	ASTM A108	
3	/		SOCKET 1-1/2"		STEEL	ASTM A108	
2	/		SOCKET 1-1/4"		STEEL	ASTM A108	
1	/		SOCKET 1"	1	STEEL	ASTM A108	
निर्देश संख्या	लागत एवं वितरण संख्या	अंग आरेखण संख्या	वर्णन	मात्रा	पदार्थ	विशिष्टि	प्रति भार कि. ग्रा.
REF. NO.	C&D NO.	PART DRG. NO.	DESCRIPTION	QTY.	MATL	SPECN	WT. EACH IN K.G.
अभिलेखित DGN	जॉचा व.अ. CHD SSE	SUBHA NKAR KUMBH AKAR	Digitally signed by Subhakar Kumbhakar Date: 2021.09.04 13:51:11 +05'30'	पदार्थ MATL	प्रति भार कि. ग्रा. WT. EACH IN KG	विशिष्टि SPECN	ASTM A108
समीक्षित स.वि.अ. / व.वि.अ. REVIEWED AEE / SEE	समीक्षित स.वि.अ. / व.वि.अ. Pradeep Khatana	Digitally signed by Pradeep Khatana Date: 2021.09.05 13:01:26 +05'30'	अनुमोदित स.वि.अ. APPROVED DYCEE	वर्णन	DESCRIPTION	वर्णन	SOCKET
दिनांक DATE	22-09-20	SYAMA PRASAD PATRA	Digitally signed by SYAMA PRASAD PATRA Date: 2021.09.05 13:01:26 +05'30'	आरेखण संख्या	1209-18.406-075	परिवर्तन संख्या	9
रैखिक अनुपात SCALE	1:1	संदर्भ / REF. 182-00349	ALT.-0	परिचय संख्या	9	पृष्ठ	1 OF 1
				परिवर्तन संख्या	9	पृष्ठ	1 OF 1
				परिवर्तन संख्या	9	पृष्ठ	1 OF 1

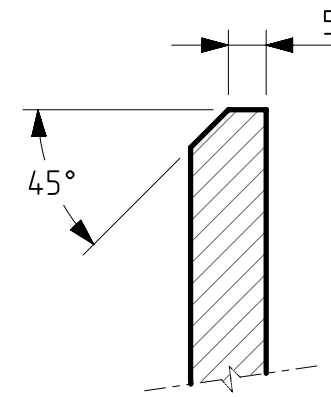
UNLESS OTHERWISE SHOWN SURFACE  
ROUGHNESS OF CUT EDGES SHALL BE Ra25 ✓  
SURFACE ROUGHNESS Ra VALUES IN µm



FLAT PLATE DEVELOPMENT



SECTION B-B  
SCALE 1:1



SECTION A-A  
SCALE 1:1

1. ALL DIMENSIONS ARE IN mm
2. C&D NO. T306/319
3. QTY./LOCO. 2 NOS.
4. NEXT LEVEL ASSEMBLY 1209-08.030-305
5. USED FOR LOCO WAG-9HC, WAP-7

आपेक्षित संचयन		अभिलेखित संचयन - सीमा मा. 2102 / अ.स. 2768										TOL. CLS			
मा. मा. 813 / अ.स. 2553		UNSPECIFIED TOLERANCE TO IS: 2027 / ISO 2768													
WELDING SYMBOLS TO IS:813 / ISO:2553															
GRADE		सं1	सं2	सं3	सं4	सं5	सं6	सं7	सं8	सं9	सं10	सं11	सं12	सं13	सं14
CR		N1	N2	N3	N4	N5	N6	N7	N8	N9	N10	N11	N12	N13	N14
Rt		0.043	0.047	0.11	0.12	0.18	0.18	0.18	0.18	0.18	0.18	0.18	0.18	0.18	0.18
Ra		25	175	0.05	0.1	0.2	0.1	0.18	0.18	0.18	0.18	0.18	0.18	0.18	0.18
SURFACE ROUGHNESS VALUE TO IS:3073 / ISO:1902															
सिग्नल															
TOLERANCE															
TOLERANCE															
TOLERANCE															
TOLERANCE															
TOLERANCE															
TOLERANCE															
TOLERANCE															
TOLERANCE															
TOLERANCE															
TOLERANCE															
TOLERANCE															
TOLERANCE															
TOLERANCE															
TOLERANCE															
TOLERANCE															
TOLERANCE															
TOLERANCE															
TOLERANCE															
TOLERANCE															
TOLERANCE															
TOLERANCE															
TOLERANCE															
TOLERANCE															
TOLERANCE															
TOLERANCE															
TOLERANCE															
TOLERANCE															
TOLERANCE															
TOLERANCE															
TOLERANCE															
TOLERANCE															
TOLERANCE															
TOLERANCE															
TOLERANCE															
TOLERANCE															
TOLERANCE															
TOLERANCE															
TOLERANCE															
TOLERANCE															
TOLERANCE															
TOLERANCE															
TOLERANCE															
TOLERANCE															
TOLERANCE															
TOLERANCE															
TOLERANCE															
TOLERANCE															
TOLERANCE															
TOLERANCE															
TOLERANCE															
TOLERANCE															
TOLERANCE															
TOLERANCE															
TOLERANCE															
TOLERANCE															
TOLERANCE															
TOLERANCE															
TOLERANCE															
TOLERANCE															
TOLERANCE															
TOLERANCE															
TOLERANCE															
TOLERANCE															
TOLERANCE															
TOLERANCE															
TOLERANCE															
TOLERANCE															
TOLERANCE															
TOLERANCE															
TOLERANCE															
TOLERANCE															
TOLERANCE															
TOLERANCE															
TOLERANCE															
TOLERANCE															
TOLERANCE															
TOLERANCE															
TOLERANCE															
TOLERANCE															
TOLERANCE															
TOLERANCE															
TOLERANCE															
TOLERANCE															
TOLERANCE															
TOLERANCE															
TOLERANCE															
TOLERANCE															
TOLERANCE															
TOLERANCE															
TOLERANCE															
TOLERANCE															
TOLERANCE															
TOLERANCE															
TOLERANCE															
TOLERANCE															
TOLERANCE															
TOLERANCE															
TOLERANCE															
TOLERANCE															
TOLERANCE															
TOLERANCE															
TOLERANCE															
TOLERANCE															
TOLERANCE															
TOLERANCE															
TOLERANCE															
TOLERANCE															
TOLERANCE															
TOLERANCE															
TOLERANCE															
TOLERANCE															
TOLERANCE															
TOLERANCE															
TOLERANCE															
TOLERANCE															
TOLERANCE															
TOLERANCE															
TOLERANCE															
TOLERANCE															
TOLERANCE															
TOLERANCE															
TOLERANCE															
TOLERANCE															
TOLERANCE															
TOLERANCE															
TOLERANCE															
TOLERANCE															
TOLERANCE															
TOLERANCE															
TOLERANCE															
TOLERANCE															
TOLERANCE															
TOLERANCE															
TOLERANCE															
TOLERANCE															
TOLERANCE															
TOLERANCE															
TOLERANCE															
TOLERANCE															
TOLERANCE															
TOLERANCE															
TOLERANCE															
TOLERANCE															
TOLERANCE															
TOLERANCE															
TOLERANCE															
TOLERANCE															
TOLERANCE															
TOLERANCE															
TOLERANCE															
TOLERANCE															
TOLERANCE															
TOLERANCE															
TOLERANCE															
TOLERANCE															
TOLERANCE															
TOLERANCE															
TOLERANCE															
TOLERANCE															
TOLERANCE															
TOLERANCE															
TOLERANCE															
TOLERANCE															
TOLERANCE															
TOLERANCE															
TOLERANCE															
TOLERANCE															
TOLERANCE															
TOLERANCE															
TOLERANCE															
TOLERANCE															
TOLERANCE															
TOLERANCE															
TOLERANCE															
TOLERANCE															
TOLERANCE															
TOLERANCE															
TOLERANCE															
TOLERANCE															