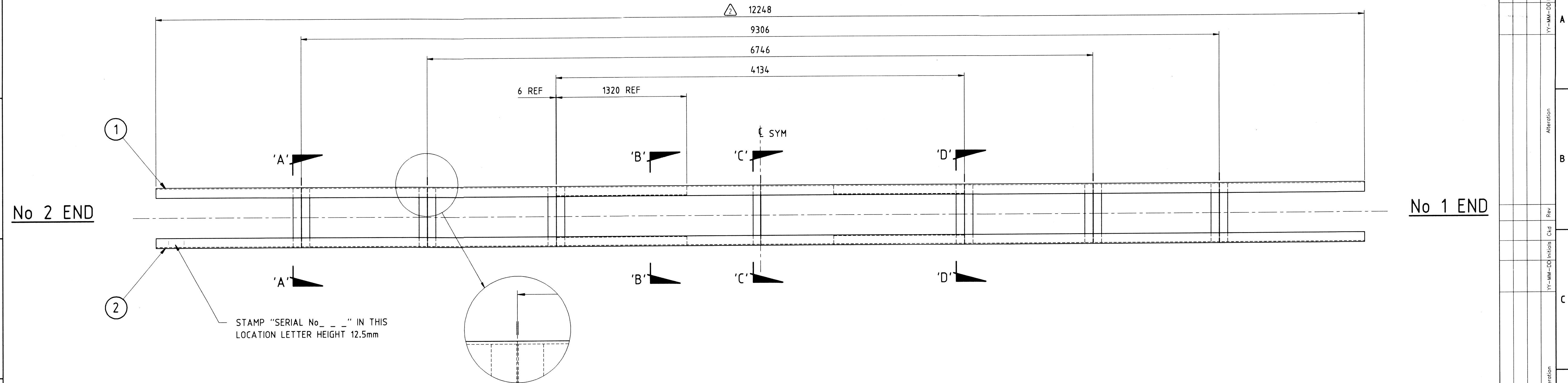


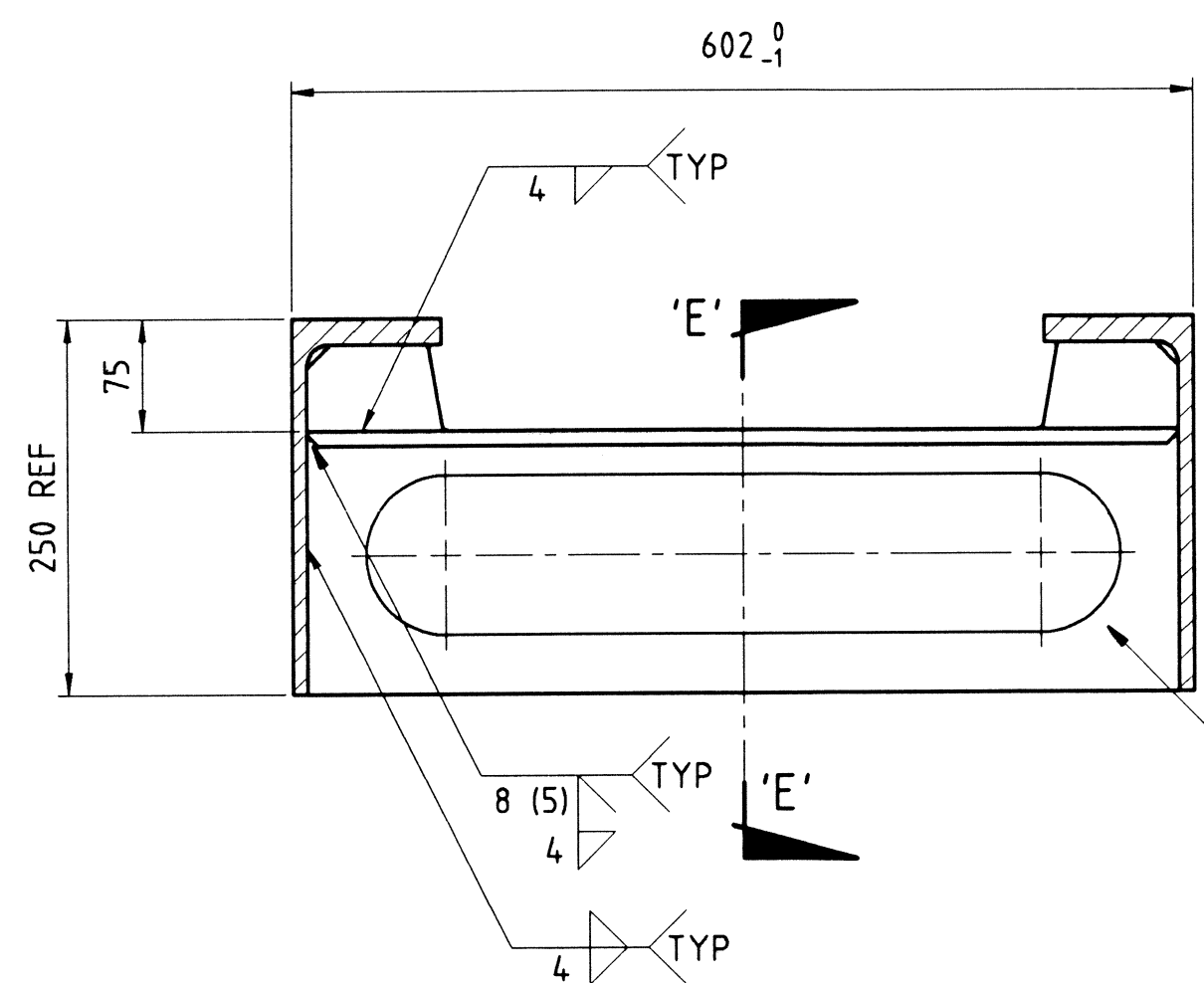
TOTAL MASS (kg) 921.5 kgs. ALL DIMENSIONS IN mm UNLESS OTHERWISE SPECIFIED. SURFACE ROUGHNESS Ra VALUES IN  $\mu m$ .

DO NOT SCALE. IF IN DOUBT ASK. REMOVE ALL BURRS & SHARP EDGES

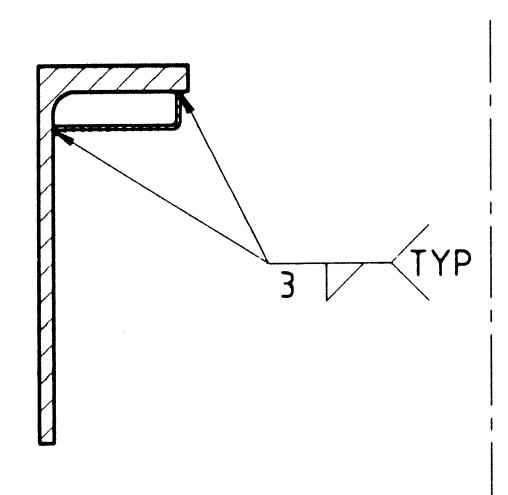


STAMP "SERIAL No. \_ \_" IN THIS LOCATION LETTER HEIGHT 12.5mm

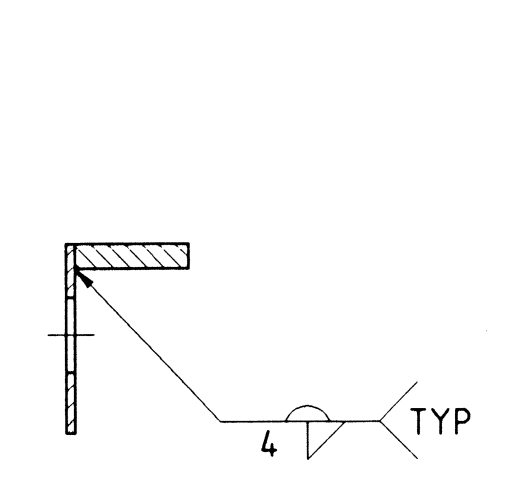
ALL DIMENSIONS TO CL. OF WEB



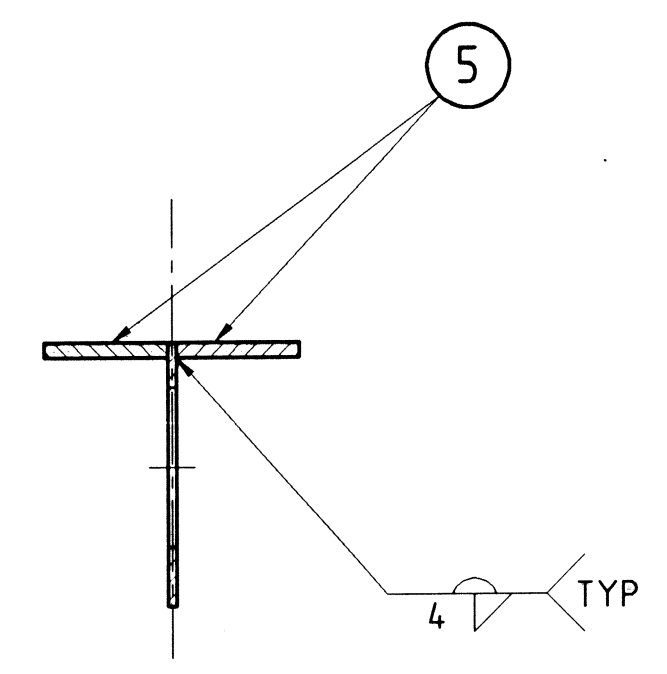
SECTION 'A-A'  
ROTATED 90° ACW  
TYP 6 PLACES  
SCALE 1:5



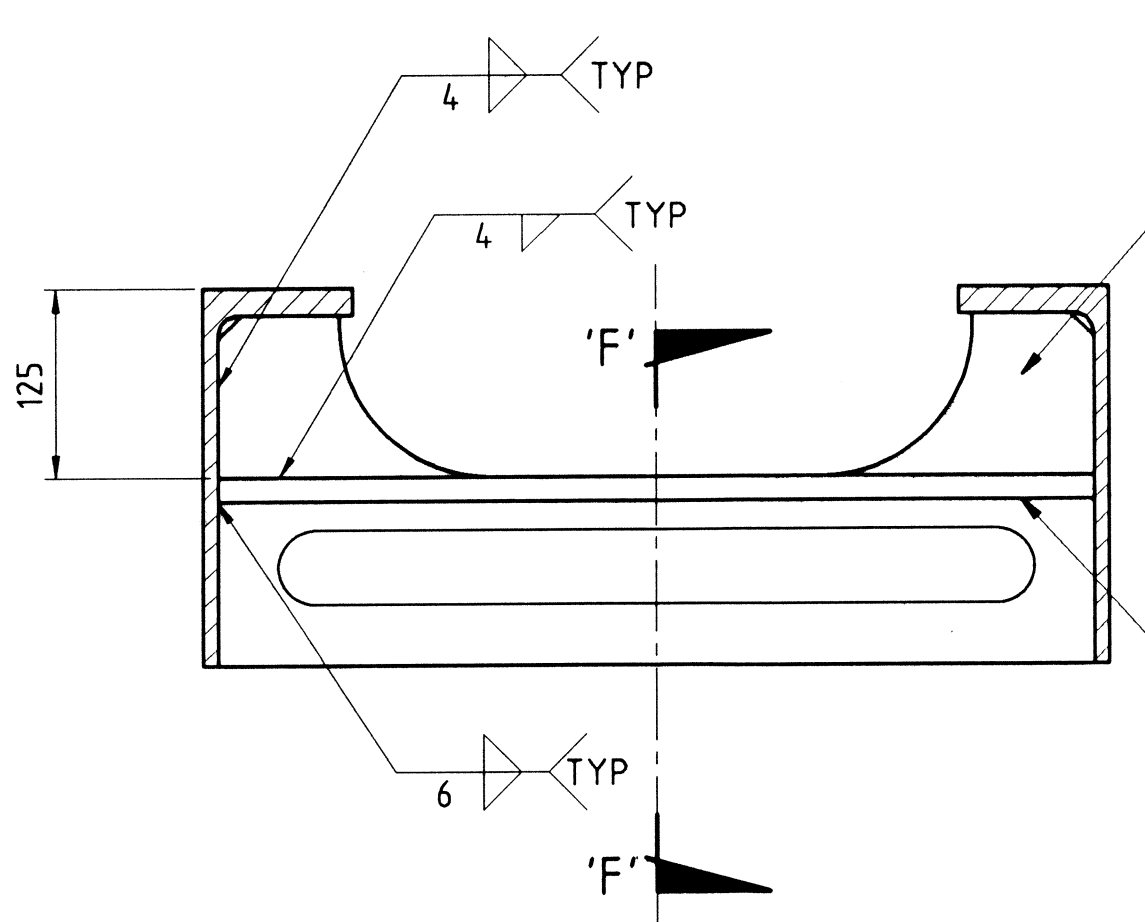
SECTION 'B-B'  
ROTATED 90° ACW  
TYP 2 PLACES  
SCALE 1:5



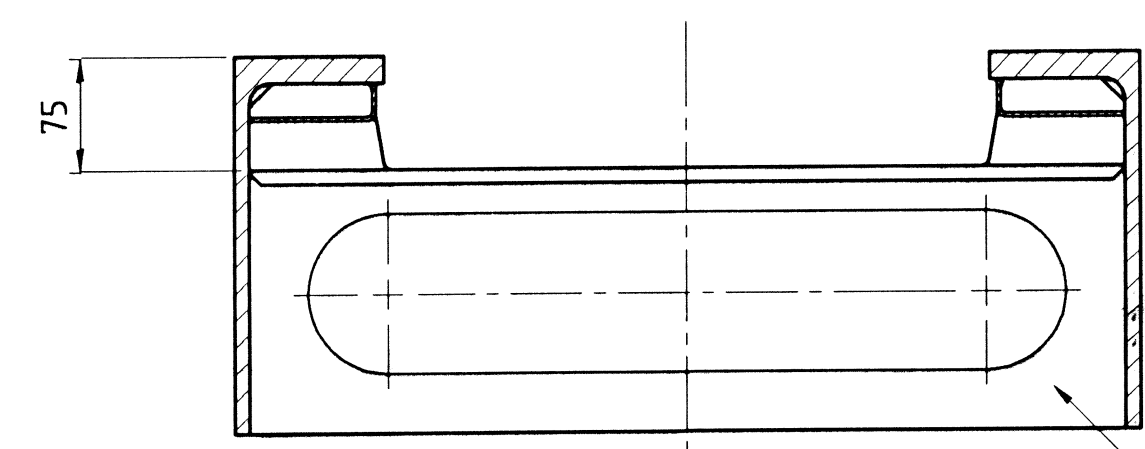
SECTION 'F-F'  
SCALE 1:5



SECTION 'E-E'  
TYP 6 PLACES  
SCALE 1:5



SECTION 'C-C'  
ROTATED 90° ACW  
SCALE 1:5



SECTION 'D-D'  
ROTATED 90° ACW  
TYP 2 PLACES  
SCALE 1:5

WELDING SHALL BE IN ACCORDANCE WITH AS1554.1-1991 SP

TRANSFER OF TECHNOLOGY  
ISSUE  
DATE 30 JUNE 1995

PART NUMBER	QTY	MASS PER ITEM (kg)	SOURCE	ITEM DESIGN	DESCRIPTION	ZONE	ITEM
IA026-00102	4	3.25			STIFFENING ANGLE		7
IA026-00104	1	5.5			FLANGE PLATE (CENTRE)		6
IA026-00105	12	3.8			FLANGE PLATE		5
IA026-00103	1	3.3			VERTICAL WEB (CENTRE)		4
IA026-00101	6	2.9			VERTICAL WEB		3
IA021-00047	1	418.4			CENTRE SILL (2 H)		2
IA021-00046	1	418.3			CENTRE SILL (C H)		1

Test Certificate		Drawn by M.L.G. 94-06-24	Checked by	3rd ANGLE PROJECTION	Customer Dwg No.
Test Results		Approved by	Proj Eng	ABB Transportation Pty Limited	ABB Dwg No. IA021-00045
Material Certificate		Part No. IA021-00179	Prod Eng	A.C.N. 010 699 804	Scale 1:20, 1:5
Initial Sample Inspection Report	✓	Contract No. C875	Weld Eng	N:\C875\PRODN\02\1-00045	Sheet 1 of 1
TYPE OF TEST/REPORT	YES NO	Next Assembly No.	Eng	N.C. Machine Program No.	

\* BOTH DRGS IA021-00046, IA021-00047 ARE SUPERSEDED BY DRG NO -1210-02-126-048, 1210-02-126-047 RESPECTIVELY VIDE FILE NO- ELDDJ3610 P17 FOR EXTRA CUTOUT FOR HOTEL LOAD CABLE ENTRY FROM DATE -12-08-09.

All rights conferred by the law of copyright and by the virtue of international copyright conventions are reserved to ABB. This drawing also requires ABB's prior written consent.

30			
29			
28			
27			
26			
25			
24			
23			
22			
21			
20			
19			
18			
17			
16			
15			
14			
13			
12			
11			
10			
9			
8			
7			
6			
5			
4			
3			
2			
1			

R34  
R  
57  
34