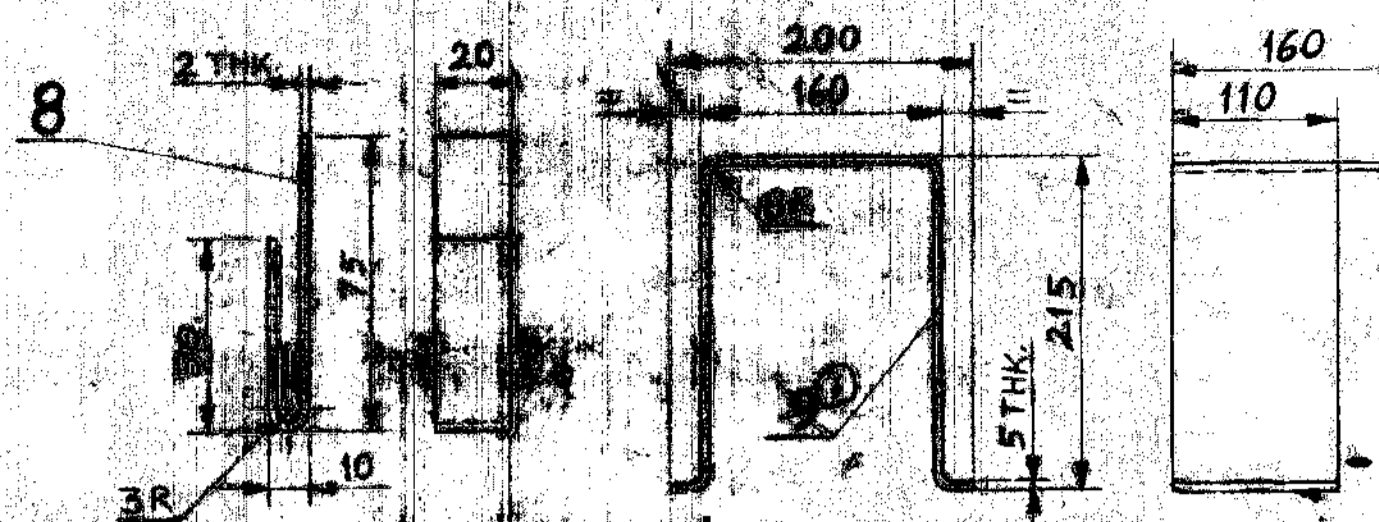
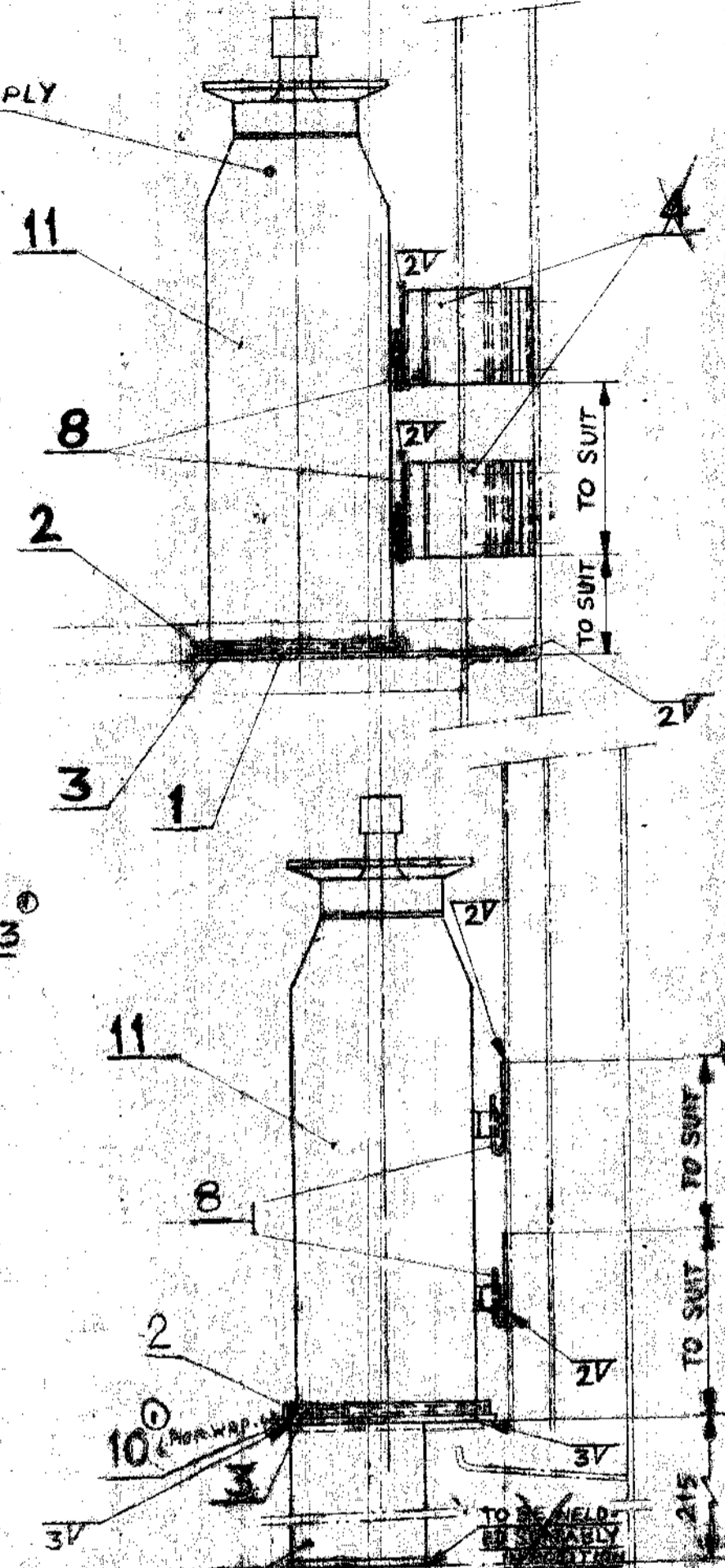
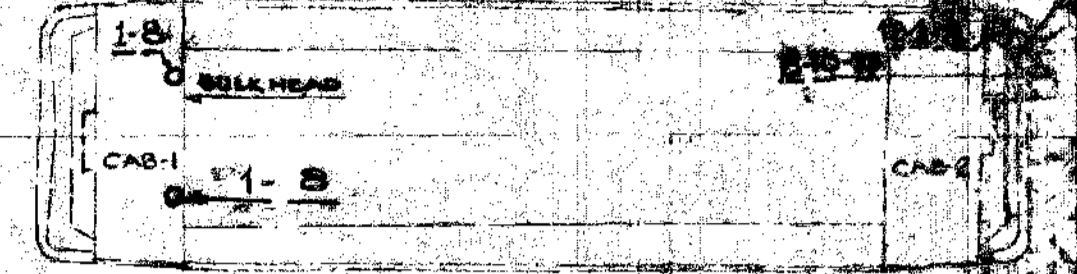


DATE OF MFG & SUPPLY
TO BE WRITTEN BY
WHITE PAINT ON THE
FIRE EXTINGUISHER.

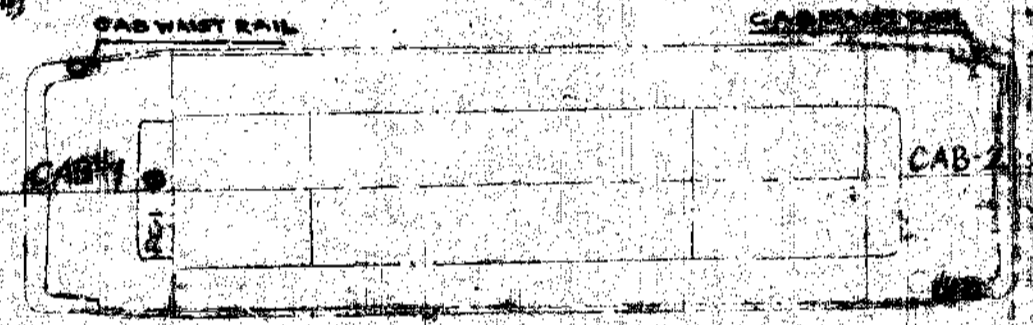
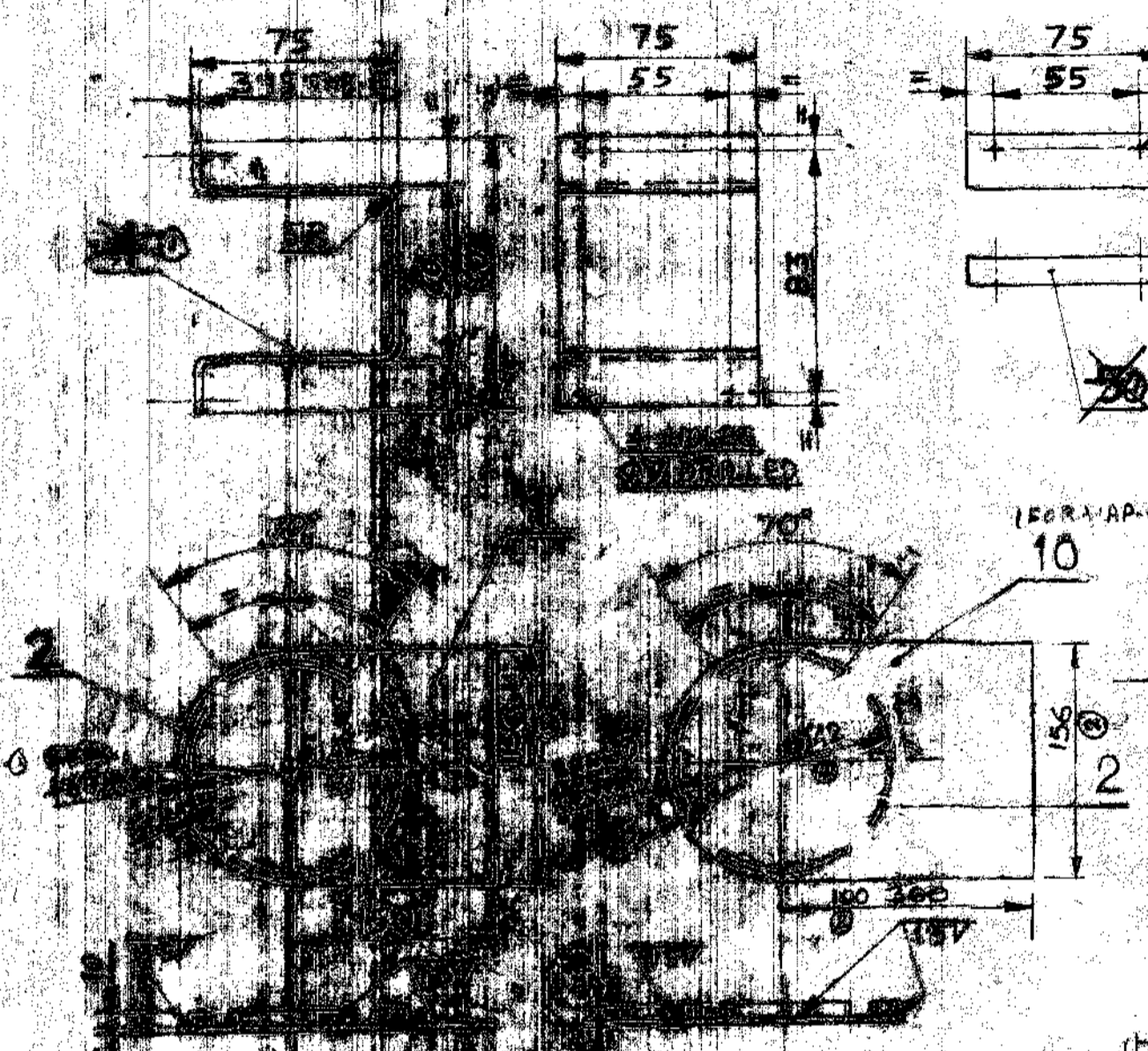


ALT.	AUTHY	DESCRIPTION	INITIAL	DATE
1	DYCEE (S)	REF. NO. 4.5. 675 BELTER REF. NO. 12.13. NO. 3A SCH MATIC LAYOUT FOR REPAIR ADDED REF. NO. 10 MODIFIED REVISIONS TO DRAWING MATERIAL SPECIFICATION SHEET SCHEDULE FOR WORK ADDED		



① SCHEMATIC SHOWING THE LOCATION OF FIRE EXTINGUISHER FOR R346/174 SPECIOUS CAB LOCOS
2-HOLES M6 TAPPED

P346/174 ASSEMBLY C.S.D. NO
R346/193



SCHEMATIC SHOWING THE LOCATION OF FIRE EXTINGUISHER FOR R346/174 & R346/193

DEV. LENGTH APPROX

DEV. LENGTH APPROX

NO.	DESCRIPTION	QTY.
1	CUSHION (PART NO. 3)	1
2	BRACKET	1
3	BRACKET	1
4	BRACKET	1
5	BRACKET	1
6	BRACKET	1
7	BRACKET	1
8	BRACKET	1
9	BRACKET	1
10	BRACKET	1
11	BRACKET	1
12	BRACKET	1
13	BRACKET	1

NOTE

- CUSHION (PART NO. 3) IS TO BE SUPPLIED LOOSE TO BE FIXED BY SYNTHETIC ADHESIVE AT CLW.
 - BRACKET (PART NO. 1) IS TO BE PAINTED WITH PRIMER.
 - BRACKET (PART NO. 2) IS TO BE PAINTED WITH PRIMER.
- BRACKET (PART NO. 3) IS TO BE PAINTED WITH PRIMER.
- BRACKET (PART NO. 4) IS TO BE PAINTED WITH PRIMER.
- BRACKET (PART NO. 5) IS TO BE PAINTED WITH PRIMER.
- BRACKET (PART NO. 6) IS TO BE PAINTED WITH PRIMER.
- BRACKET (PART NO. 7) IS TO BE PAINTED WITH PRIMER.
- BRACKET (PART NO. 8) IS TO BE PAINTED WITH PRIMER.
- BRACKET (PART NO. 9) IS TO BE PAINTED WITH PRIMER.
- BRACKET (PART NO. 10) IS TO BE PAINTED WITH PRIMER.
- BRACKET (PART NO. 11) IS TO BE PAINTED WITH PRIMER.
- BRACKET (PART NO. 12) IS TO BE PAINTED WITH PRIMER.
- BRACKET (PART NO. 13) IS TO BE PAINTED WITH PRIMER.

ALL DIMENSIONS UNLESS OTHERWISE SPECIFIED SHALL BE AS PER IS: 812-COARSE. DIMENSIONS TO IS: 813.

NO.	DESCRIPTION	QTY.
13	BRACKET	1
12	BRACKET	1
11	BRACKET	1
10	BRACKET	1
9	BRACKET	1
8	BRACKET	1
7	BRACKET	1
6	BRACKET	1
5	BRACKET	1
4	BRACKET	1
3	CUSHION (PART NO. 3)	1
2	BRACKET	1
1	BRACKET	1

DATE	SIGNATURE	DESCRIPTION	INITIAL	DATE
21.7.97	[Signature]	WAS: 7.11.97		
28.7.92	[Signature]			

DATE	SIGNATURE	DESCRIPTION	INITIAL	DATE
21.7.97	[Signature]	WAS: 7.11.97		
28.7.92	[Signature]			

DATE	SIGNATURE	DESCRIPTION	INITIAL	DATE
21.7.97	[Signature]	WAS: 7.11.97		
28.7.92	[Signature]			

DRY CHEMICAL POWDER FIRE EXTINGUISHER WITH MOUNTING

06/197/30/13